

AXRO2BASIC

Cyklop's elastic binders have been an established industry standard for many years now. The AXRO2Basic is a well designed elastic binder based on our many years of experience. We manufacture the binders ourselves so that continuous development and consistent quality is guaranteed. The binder is suitable for manually bundling small manageable products with elastic, such as flowers, tubing, cables, and many other products.

TECHNICAL SPECIFICATIONS

ITEM	DESCRIPTION	CAPACITY
1	CAPACITY	Up to 60 cycles/minute
2	DIMENSIONS (HxWxD)	680 x 422 x 446 mm
3	INPUT HEIGHT	140 mm
4	INPUT DEPTH	239 mm
5	INPUT	Left
6	TABLETOP	Galvanised
7	STARTER SWITCH	In tabletop
8	STRING TENSION	Adjustable
9	CONSUMABLES	Cylastic PCs 1300, PES, PE
10	POWER SUPPLY	230 V, 50 Hz, 1 ph
11	WEIGHT	45 kg

ADVANTAGES

ITEM	DESCRIPTION
1	For elastic cord Cylastic PCs 1300, Cylastic PE.
2	Very easy operation.
3	Strong, robust design for heavy use.
4	Low maintenance and easy to clean.
5	Low noise level.
6	Up to 60 cycles / minute.

Options:

- Support frame with 4 swivel wheels. 2 with brake.



All rights reserved by iSiiNitzan. Reproduction and distribution of any part of this document is prohibited.

iSii-Nitzan GmbH

Via Cremignone 4C, Sorengo,
Switzerland, CH 6924

+(41) 765851837

info@isii-nitzan.swiss

www.isii-nitzan.swiss

More Information:



Versión: J2024-1

AXRO FQC2

The AXRO-FQC2 is a bundling machine, suitable for bundling, for example, flowers, fish, meat and lots of small packages. However, this elastic binder is also very suitable for bundling cables and cords, and thereby replacing the expensive, heavy and sharp alternatives such as tie wraps and twist wraps. The AXRO-FQC2 is equipped with a robust feed-in mechanism, which ensures that the product is properly bound even with a fast binding time. The AXRO-FQC2 is also equipped with a knotter release system (KRS), which controls the release of the knot. The advantage of this is that there is a minimal pull on the (soft) product, so that no damage will occur.

The AXRO-FQC2 is a compact and light machine and can function as a standalone machine or in an automatic line. The machine is mounted on a solid, flat aluminium base plate. This greatly reduces the noise, which is a good thing for the employees.

EASY TO USE

The product is pushed against the elastic. The machine switches on and the needle arm pulls the elastic string behind the bundle in to the tying mechanism. The elastic ends are knotted and cut. The end of the elastic string returns with the needle arm to the “up position” and is ready for a new cycle. Everyone can bundle products quickly and professionally with the AXRO-FQC2!



Options:

- Stainless steel version
- Vertical or upside down construction
- I-O connector for PLC communication
- String-end detection
- 4-wheel support frame
- Timer function for delayed binding moment



TECHNICAL SPECIFICATIONS

ITEM	DESCRIPTION	CAPACITY
1	CAPACITY	Up to 6000 cycles / hour
2	DIMENSIONS (HxWxD)	780 x 495 x 418 mm
3	FEED THROUGH DEPTH (HXD)	150 x 250* mm *350 or 600 <i>optional</i>
4	INPUT	From left (standard) to right
5	TABLETOP	Stainless steel
6	STARTER SWITCH	Table top switch* *Top switch or photocel <i>optional</i>
7	STRING TENSION	Adjustable up to 110 N
8	CONSUMABLE	Cylastic PE, PSc 1300, 2K, 3 K
9	POWER	200-240 V / 50-60 Hz / 1 phase 100-120 V / 50-60 Hz / 1 phase
10	WEIGHT	47 kg
11	NOISE	max. 57,2 dB

All rights reserved by iSiinitzan. Reproduction and distribution of any part of this document is prohibited.



ART. No.:	MAIN AND DESCRIPTION
87101900	B AXRO-2-BASIC
87101700	B AXRO-FQC2 R 200-240V, 50-60Hz With start switch in table top. Enlarged table top
87101701	B AXRO-FQC2 L 200-240V, 50-60Hz With start switch in table top. Enlarged table top
87101702	B AXRO-FQC2 R-3K 200-240V, 50-60Hz With start switch in table top. Enlarged table top
87101703	B AXRO-FQC2 L-3K 200-240V, 50-60Hz With start switch in table top. Enlarged table top
87101704	B AXRO-FQC2 R-TS 200-240V, 50-60Hz Incl. start Top Switch.
87101705	B AXRO-FQC2 L-TS 200-240V, 50-60Hz Incl. start Top Switch.
87101706	B AXRO-FQC2 R-TS-3K 200-240V, 50-60Hz Incl. start Top Switch. For 3K String
87101707	B AXRO-FQC2 L-TS-3K 200-240V, 50-60Hz Incl. start Top Switch. For 3K String
87101708	B AXRO-FQC2 R-TS-PLC 200-240V, 50-60Hz Incl. start Top Switch. Incl. 8-p connector for PLC control, start button, string end detection
87101709	B AXRO-FQC2 L-TS-PLC 200-240V, 50-60Hz Incl. start Top Switch. Incl. 8-p connector for PLC control, start button, string end detection
87101710	B AXRO-FQC2 R-PLC 200-240V, 50-60Hz Incl. 8-p connector for PLC control, start button, string end detection
87101711	B AXRO-FQC2 L-PLC 200-240V, 50-60Hz Incl. 8-p connector for PLC control, start button, string end detection
87101796	B AXRO-FQC2 R-3K-PLC 200-240V Incl. 8-p connector for PLC control, start button, string end detection. For 3K String
87101797	B AXRO-FQC2 L-3K-PLC 200-240V Incl. 8-p connector for PLC control, start button, string end detection. For 3K String
87101720	B AXRO-FQC2 R-RVS-TS 200-240V, 50-60Hz Incl. start Top Switch. Side covers made of Stainless steel.
87101721	B AXRO-FQC2 L-RVS-TS 200-240V, 50-60Hz Incl. start Top Switch. Side covers made of Stainless steel.
87101724	B AXRO-FQC2 R-RVS-TS-PLC 200-240V 50-60Hz Incl. 8-p connector for PLC control, start button, string end
87101725	B AXRO-FQC2 L-RVS-TS-PLC 200-240V 50-60Hz Incl. 8-p connector for PLC control, start button, string end detection. Incl Top switch. Side covers made of Stainless steel
87101800	B AXRO-FQC2-R 100-120V 50-60Hz With start switch in table top
87101801	B AXRO-FQC2-L 100-120V 50-60Hz With start switch in table top
87101802	B AXRO-FQC2-R-3K 100-120V 50-60Hz With start switch in table top, for 3K string
87101803	B AXRO-FQC2-L-3K 100-120V 50-60Hz With start switch in table top, for 3K string



AXRO FQC2 SPECIALS

The Cyklop Axro FQC2 M is a well-known elastic binder, constructed in stainless steel. That makes it very suited for working in humid areas such as in the food industry. This machine is fitted with the AXRO clamping and knotting technology which has more than proven its reliability over the years. The AXRO-FQC2 is fitted with an updated “feed-in” mechanism whereby products are still bound properly even in the event of premature bind timing. This unit is also equipped with a knot-release system which controls the release of the knot. This results in minimal pulling to the product and prevents it from incurring any damage. The binder is suitable for manually bundling products such as flowers, vegetables, cables, and many other products.



TECHNICAL SPECIFICATIONS

ITEM	DESCRIPTION	CAPACITY
1	SPEED	Up to 100 cycles/minute
2	DIMENSIONS (HxWxD)	780 x 495 x 418 mm
3	TRANSIT DEPTH (HxD)	150 x 250* mm * 350 or 600 mm <i>optional</i>
4	INPUT	Left (standard), right <i>optional</i>
5	START SWITCH	Tabletop* * Upper switch or photocel <i>optional</i>
6	STRING TENSION	Adjustable up to 110 N
7	CONSUMABLES	Cylastic PES, PCs 1300, 3K
8	POWER SUPPLY	200-240 V / 50-60 Hz / 1 phase 100-120 V / 50-60 Hz / 1 phase
9	WEIGHT	47 kg
10	NOISE	Max. 5,7 dB



ADVANTAGES

ITEM	DESCRIPTION
1	For elastic cord Cylastic PES, Cylastic PCs 1300, Cylastic 3K.
2	Can be integrated into automatic machine lines.
3	Extremely easy operation.
4	Robust, capable of continuous operation.
5	Minimal maintenance.
6	Low noise.
7	Up to 100 cycles/minute.
8	Stainless Steel: suitable for wet conditions.

All rights reserved by iSiiNitzan. Reproduction and distribution of any part of this document is prohibited.



AXRO MD 35 / 60

The Axro MD 35/60 has the Axro binding techniques, which has for years been used in other Axro models. The Axro MD 35/60 is designed for strapping products with a maximum of 300 mm or 600mm in depth. This machine can be used in multiple industries, including the copper and flower industry.

TECHNICAL SPECIFICATIONS

ITEM	DESCRIPTION	CAPACITY
1	CAPACITY	Up to 60 cycles/minute
2	DIMENSIONS (HxWxD)	925 x 390 x 820 mm
3	INPUT HEIGHT	150 mm
4	INPUT DEPTH	350 mm (MD35) or 600 mm (MD60)
5	INPUT	Left (standard), right optional
6	TABLETOP	Stainless steel
7	STARTER SWITCH	Foot pedal, photocel, laser or PLC
8	STRING TENSION	Adjustable
9	CONSUMABLES	Cylastic PES, Pcs 1300, 3K
10	POWER SUPPLY	230V, 110V, 50Hz, 1 ph
11	WEIGHT	80 kg



Options:

- Moveable, 4-wheel support frame.

ADVANTAGES

ITEM	DESCRIPTION
1	For elastic cord Cylastic PES, Cylastic PCs 1300, Cylastic 3K.
2	Can be integrated into automatic machine lines.
3	Robust and reliable.
4	Low maintenance.
5	Extremely easy operation.
6	Low noise.
7	Maximum throughput height is 150 mm.
8	Driven throughput with a depth of 350 mm (MD35) or 600mm (MD60).
9	Up to 60 cycles / minute.

All rights reserved by iSiiNitzan. Reproduction and distribution of any part of this document is prohibited.

iSii-Nitzan GmbH

Via Cremignone 4C, Sorengo,
Switzerland, CH 6924

+(41) 765851837

info@isii-nitzan.swiss

www.isii-nitzan.swiss

More Information:



Versión: J2024-1

AXRO MD 35 / 60 XL

The Axro MD 35 XL is designed for strapping long, high products with a maximum throughput of 600mm depth. This machine can be used in several industries, including the carpet and flower industry.



TECHNICAL SPECIFICATIONS

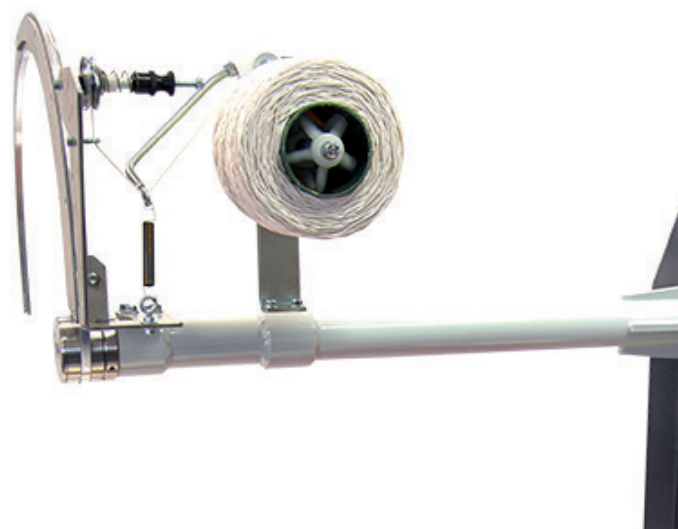
ITEM	DESCRIPTION	CAPACITY
1	CAPACITY	Up to 3,500 cycles/hour
2	DIMENSIONS (HxWxD)	921 x 392 x 545 mm
3	INPUT HEIGHT	300 mm
4	INPUT DEPTH	350 mm (MD35) or 600 mm (MD60)
5	INPUT	Left (standard), right optional
6	TABLETOP	Stainless steel
7	STARTER SWITCH	Foot pedal, photocell, laser cell or PLC
8	STRING TENSION	Adjustable
9	CONSUMABLES	Cylastic PES, PCs 1300, PE, 3K
10	POWER SUPPLY	230V, 110V, 50Hz, 1 ph
11	WEIGHT	80 kg

Options:

- Moveable, 4-wheel support frame.

ADVANTAGES

ITEM	DESCRIPTION
1	For elastic cord Cylastic PES, Cylastic PCs 1300, Cylastic 3K.
2	Up to 3500 cycles/hour.
3	Based on the robust Axro technique.
4	Rugged, suitable for continuous operation.
5	With a maximum throughput depth of 350 mm (MD35) or 600 mm (MD60).
6	Maximum throughput height is 300 mm.
7	Easy to build into an automatic processing line.
8	Easy to operate.
9	All functions are operated automatically by start sensor, footswitch, PLC.
10	Robust, durable, very reliable.
11	Minimum maintenance.
12	Reduced noise.



ART. No.:	MAIN AND DESCRIPTION	
87101730	B	AXRO-FQC2 R-MD35 200-240V, 50-60Hz Start switch in table top. Enlarged table top. Feed through depth 35 cm.
87101731	B	AXRO-FQC2 L-MD35 200-240V, 50-60Hz Start switch in table top. Enlarged table top. Feed through depth 35 cm.
87101734	B	AXRO-FQC2 R-MD35-TS 200-240V, 50-60Hz
87101735	B	AXRO-FQC2 L-MD35-TS 200-240V, 50-60Hz Incl. start Top Switch. Feed through dept 35 cm.
87101738	B	AXRO-FQC2 R-MD35-TS-PLC 200-240V, 50-60Hz Incl. start Top Switch. Incl. 8-p connector for PLC control, start button, string end detection. Feed through depth 35 cm
87101739	B	AXRO-FQC2 L-MD35-TS-PLC 200-240V, 50-60Hz Incl. start Top Switch. Incl. 8-p connector for PLC control, start button, string end detection. Feed through depth 35 cm
87101770	B	AXRO-FQC2 R-MD60-TS 200-240V, 50-60Hz Incl. start Top Switch. Feed through depth 60 cm
87101771	B	AXRO-FQC2 L-MD60-TS 200-240V, 50-60Hz Incl. start Top Switch. Feed through depth 60 cm
87101785	B	AXRO-FQC2-R-MD60-TS-PLC 200-240V Incl. start Top Switch. Incl. 8-p connector for PLC control, start button, string end detection. Feed through depth 60 cm
87101785	B	AXRO-FQC2-L-MD60-TS-PLC 200-240V Incl. start Top Switch. Incl. 8-p connector for PLC control, start button, string end detection. Feed through depth 60 cm
87101817	C	AXRO-FQC2 R-MD35-XL 200-240V, 50-60Hz Feed through depth 35cm, Feed through heigth 30cm Incl. Jumbo Spool Holder
87101780	C	AXRO-FQC2 R-MD60-XL 200-240V, 50-60Hz Feed through depth 60cm, Feed through heigth 30cm Incl. Jumbo Spool Holder
87101750	B	AXRO-FQC2 Marine R 200-240V, 50-60Hz Completely Stainless Steel machine. With start switch in table top. Enlarged table top
87101751	B	AXRO-FQC2 Marine L 200-240V, 50-60Hz Completely Stainless Steel machine. With start switch in table top. Enlarged table top
87101754	B	AXRO-FQC2 Marine R-TS 200-240V, 50-60Hz Completely Stainless Steel machine. With start Top Switch.
87101755	B	AXRO-FQC2 Marine L-TS 200-240V, 50-60Hz Completely Stainless Steel machine. With start Top Switch.

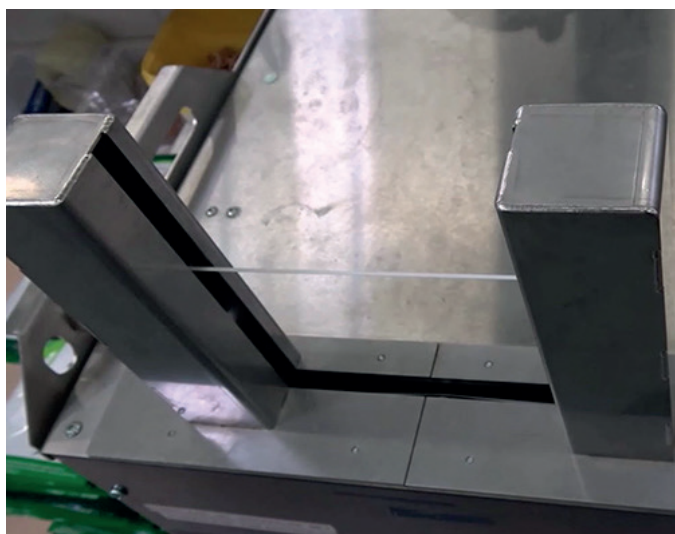
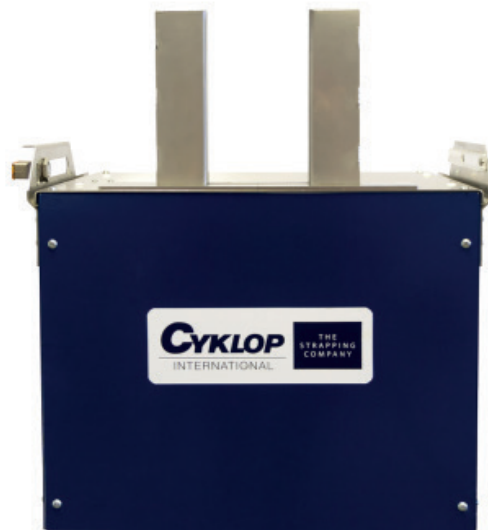


ELASTOBINDER

The Elastobinder has been specially developed for (fully automatic) bundling of light products with one elastic, the Strepper®. The advantages of this bundling method are: it has a closed form (knots are no longer needed), the elastic does not deform the product, it leaves no damage and with one size Strepper® both large and small products can be bundled. The Elastobinder® can be used horizontally and vertically. Product import is done by hand or by means of a conveyor belt or turntable.

TECHNICAL SPECIFICATIONS

ITEM	DESCRIPTION	CAPACITY
1	CAPACITY	Up to 45 cycles/min.
2	ARCH HEIGHT	Up to 160 x 160 mm or max. 400 x 400 mm (B x H)
3	CONSUMABLES	Cyklop Strepper®
4	POWER SUPPLY	230 V, 50 Hz - 1 phase
5	AIR SUPPLY	6 Bar
6	CONTROL	PLC
7	SAFETY	According to CE-norm



Options:

- Automatic label unit.

ADVANTAGES

ITEM	DESCRIPTION
1	Horizontal and vertical bundling.
2	Fast, reliable and cost-saving.
3	For products with irregular shapes.
4	Max. 45 cycles per minute.
5	Can be integrated in an automatic line.
6	Environmentally friendly, elastic is recyclable.

ART. No.:

MAIN AND DESCRIPTION

87101208 B Elastobinder EB-Vario

All rights reserved by iSiiNitzan. Reproduction and distribution of any part of this document is prohibited.

