

CENTRIFUGAL HORIZONTAL



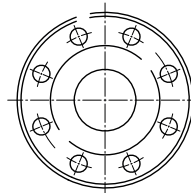
ITEM THECNICAL CHARACTEISTICS

- 1 ENERGY SAVING BY MODULATING THE SPEED
- 2 PROTECTION AGAINST OVERVOLTAGE, OVERCURRENT, DRY RUNNING, AND PIPE BREAKAGE
- 3 CONSTANT PRESSURE INDEPENDENT OF THE DEMANDED FLOW RATE
- 4 SOFT START AND STOP OF THE PUMP
- 5 VOLTAGE EXTENDED 4-LINE DISPLAY

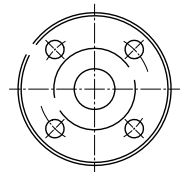
ART. CODE	DN1	DN2
32-125/160/200	DN 50	DN 32
40-125/160/200	DN 65	DN40
50-125/160/200	DN 65	DN 50
65-125/160/200/250	DN 80	DN 65
80-160/200/250	DN 100	DN 80

SUCTION

DISCHARGE



DN1



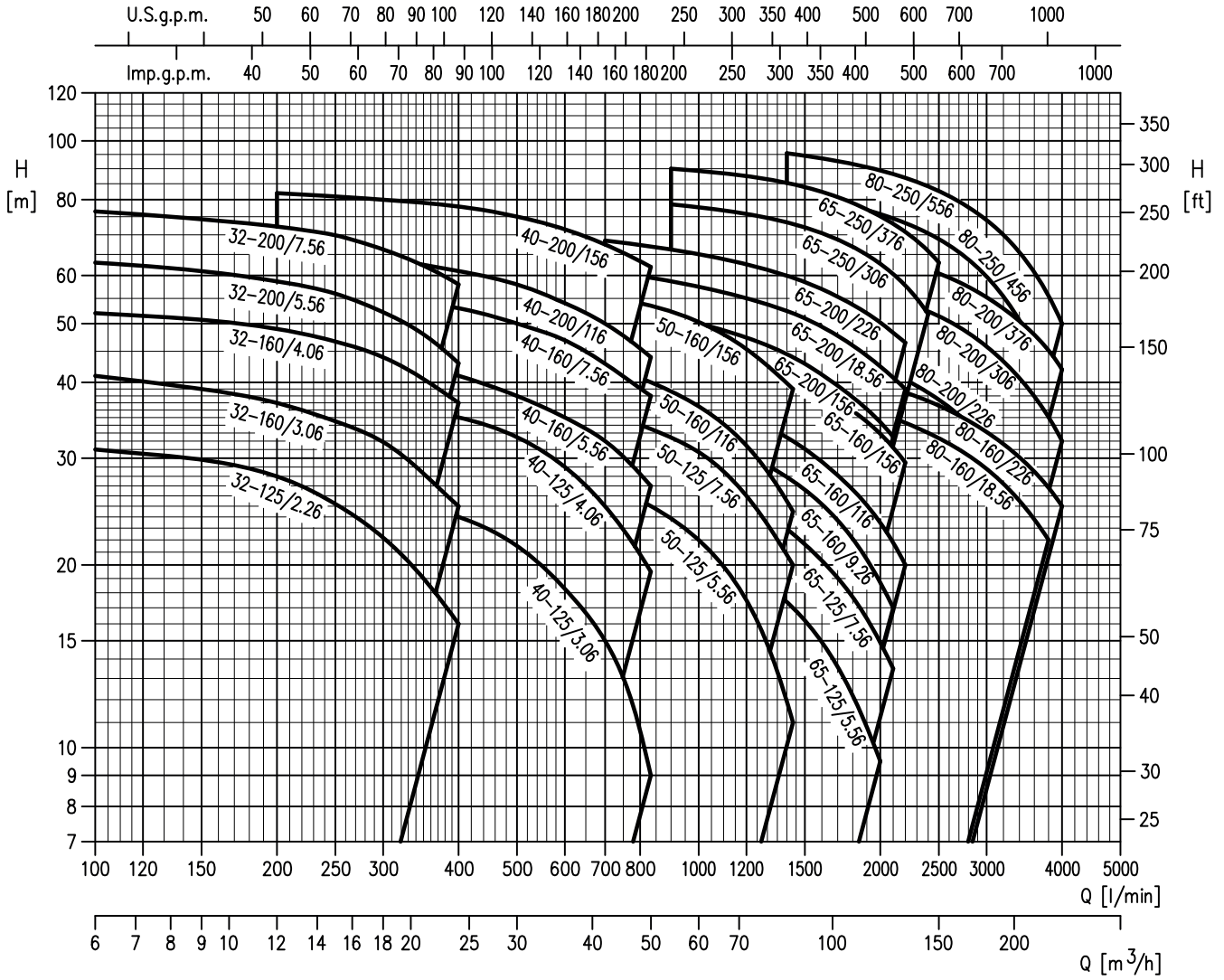
DN2

MOTOR

ITEM	CHARACTERISTIC	DESCRIPTION
1	TYPE	THREE PHASES
2	No. OF POLES	2
3	ROTATION SPEED	3500
4	PROTECTION DEGREE	IP 55
5	FREQUENCY	50 - 60 HZ
6	VOLTAGE	220/380-460 UP TO 4.0 kW, 380-460/660 5.5 kW AND ABOVE
7	CASING MATERIAL	AISI 304
8	IMPELLER MATERIAL	AISI 304



PERFORMANCE RANGE



CENTRIFUGAL HORIZONTAL



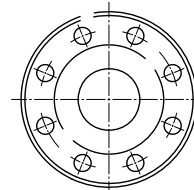
ITEM TECHNICAL CHARACTERISTICS

- 1 UP TO 240 M3/H FOR 2 POLES RANGE, UP TO 144 M3/H FOR 4 POLES RANGE
- 2 HYDRAULIC PERFORMANCE COMPLIANT WITH ISO 9906:2012 GRADE 3B
- 3 MAXIMUM HEAD: UP TO 117 M FOR 2 POLES RANGE, UP TO 31 M FOR 4 POLES RANGE
- 4 MAXIMUM OPERATING PRESSURE: 12 BAR @ 50 °C AND 10 BAR @ 120 °C
- 5 ANTI-CLOCKWISE ROTATION WHEN FACING PUMP'S SUCTION PORT

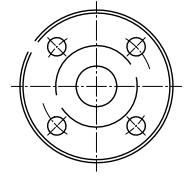
ART. CODE	DN1	DN2
25-125/250	DN 50	DN 25
32-125/250	DN 50	DN 32
40-125/250	DN 65	DN 40
50-125/250	DN 65	DN 50
65-160/200	DN 80	DN 65
80-160/200	DN 100	DN 80

SUCTION

DISCHARGE



DN1



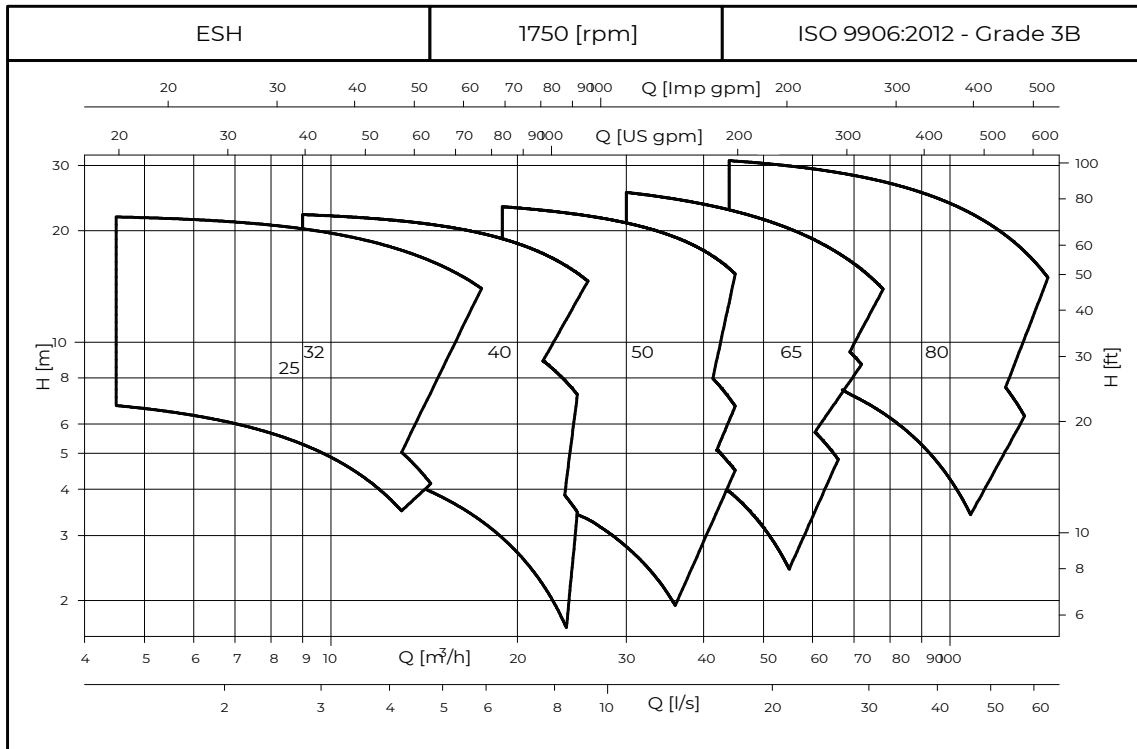
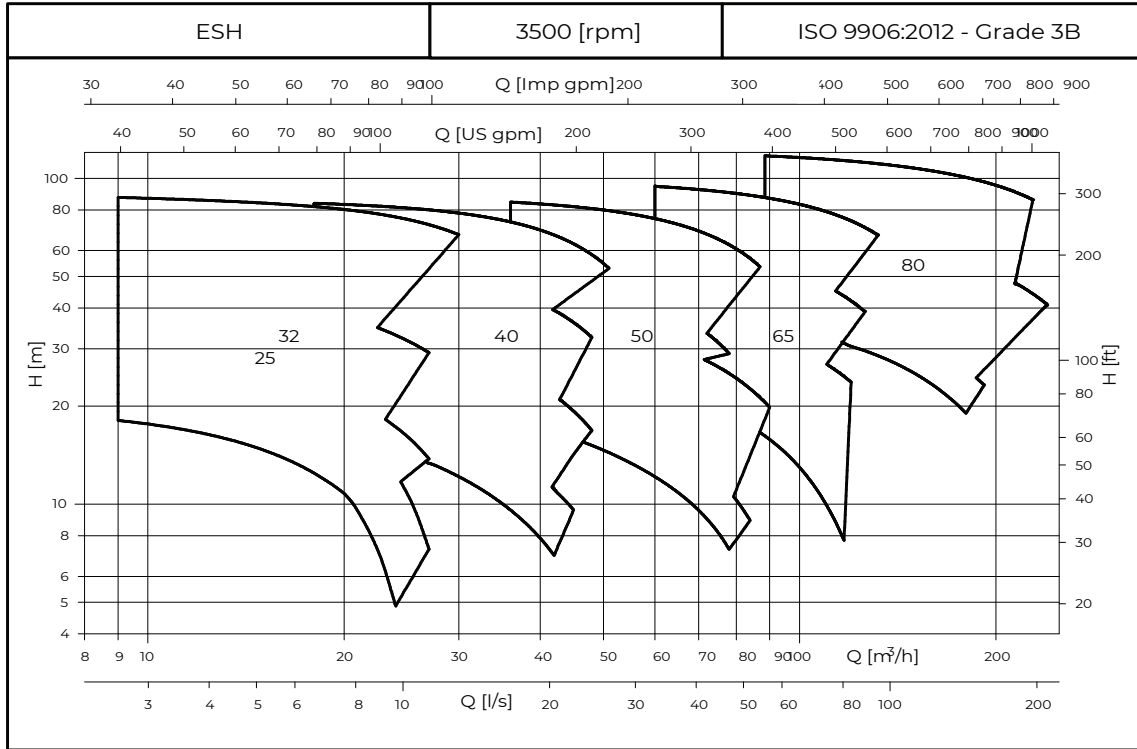
DN2

MOTOR

ITEM	CHARACTERISTIC	DESCRIPTION
1	TYPE	THREE PHASES
2	No. OF POLES	2-4
3	ROTATION SPEED	3500-1750
4	PROTECTION DEGREE	IP 55
5	FREQUENCY	50 - 60 HZ
6	VOLTAGE	220 380 440 660 V
7	CASING MATERIAL	AISI 316
8	IMPELLER MATERIAL	AISI 316



PERFORMANCE RANGE



All rights reserved by iSinitzan. Reproduction and distribution of any part of this document is prohibited.



CENTRIFUGAL HORIZONTAL



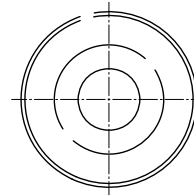
ITEM TECHNICAL CHARACTERISTICS

- 1 LOW-PROFILE BASE PLATE FOR EASY INSTALLATION IN COMPACT SYSTEMS
- 2 CUSTOMIZABLE PUMP VARIANTS TAILORED TO SPECIFIC APPLICATIONS
- 3 COMPLIANT WITH ECODESIGN REQUIREMENTS FOR WATER PUMPS UNDER THE ERP DIRECTIVE
- 4 AVAILABLE WITH DIFFERENT VOLTAGE AND FREQUENCY COMBINATIONS FOR GLOBAL MARKETS
- 5 SINGLE-PHASE OPERATION AS STANDARD, THREE-PHASE OPERATION AVAILABLE ON REQUEST

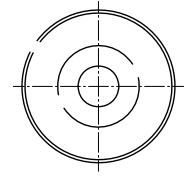
ART. CODE	DN1	DN2
CM 1-A, 1-I	1"	1"
CM 3-A, 3-I	1"	1"
CM 5-A, 5-I	1"	1 1/4"
CM 10-A, 10-I	1 1/2"	1 1/2"
CM 15-A, 15-I	2"	2"
CM 25-A, 25-I	2"	2"

SUCTION

DISCHARGE



DN1



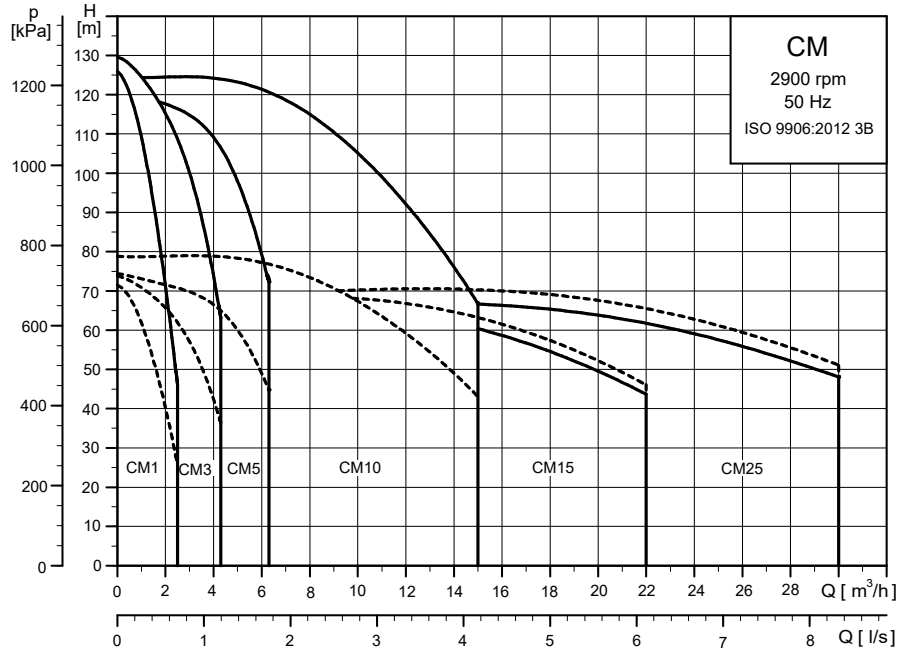
DN2

MOTOR		
ITEM	CHARACTERISTIC	DESCRIPTION
1	TYPE	SINGLE AND THREE PHASES
2	No. OF POLES	2
3	POWER	FROM 0.37 TO 1.5 kW (S.P), FROM 0.37 TO 7.5 kW (T.P)
4	PROTECTION DEGREE	IP 55
5	FREQUENCY	50 - 60 HZ
6	VOLTAGE	120 220 380 440 V
7	CASING MATERIAL	AISI 304
8	IMPELLER MATERIAL	AISI 304

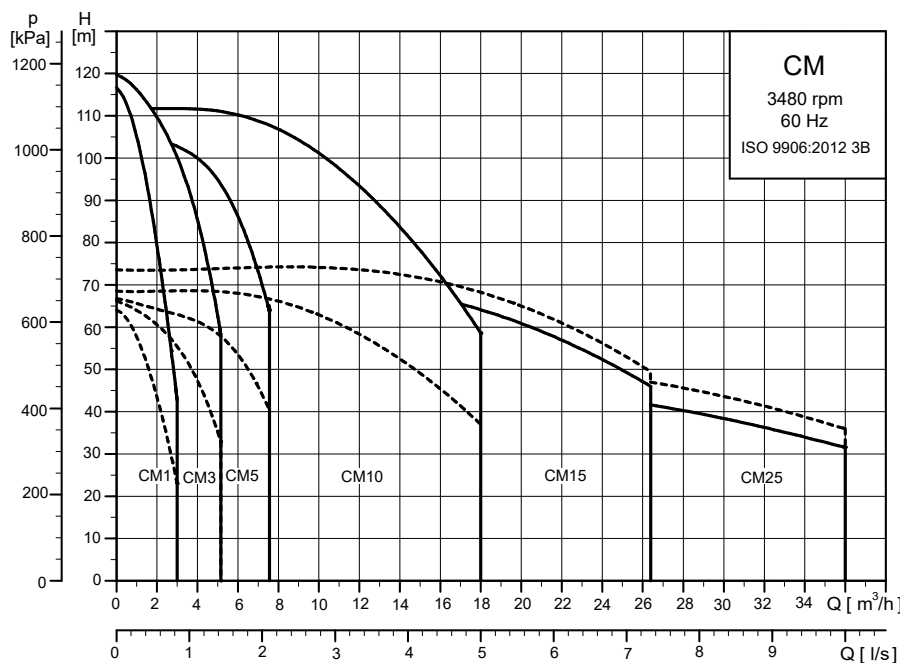
All rights reserved by iSiiNitzan. Reproduction and distribution of any part of this document is prohibited.



PERFORMANCE RANGE



----- **CM-A**
 ——— **CM-I/G**



----- **CM-A**
 ——— **CM-I/G**

