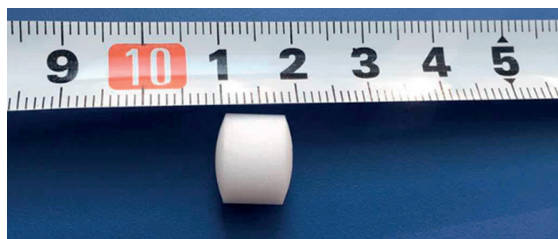


CHEMICAL COMPOSITION

ITEM	DESCRIPTION	TYPICAL
1	POTASSIUM CHLORIDE (NaCl)	99,50%
2	CALCIUM (Ca)	0,01%
3	MAGNESIUM (Mg)	0,01%



GRANULOMETRY

ITEM	DESCRIPTION	TYPICAL
1	HEIGHT	10 mm
2	DIAMETER	12 mm
3	WEIGHT	2 g

SPECIFICATIONS

ITEM	DESCRIPTION	CAPACITY
1	FORMULATION	Tablets
2	PACKING	25 kg bags
3	STORAGE	Store in a cool, dry and ventilated place.

USE:

Helps remove minerals from water, including iron, calcium, magnesium, and even barium. These minerals are removed from the water as it passes through a resin in the reservoir of a softener.

