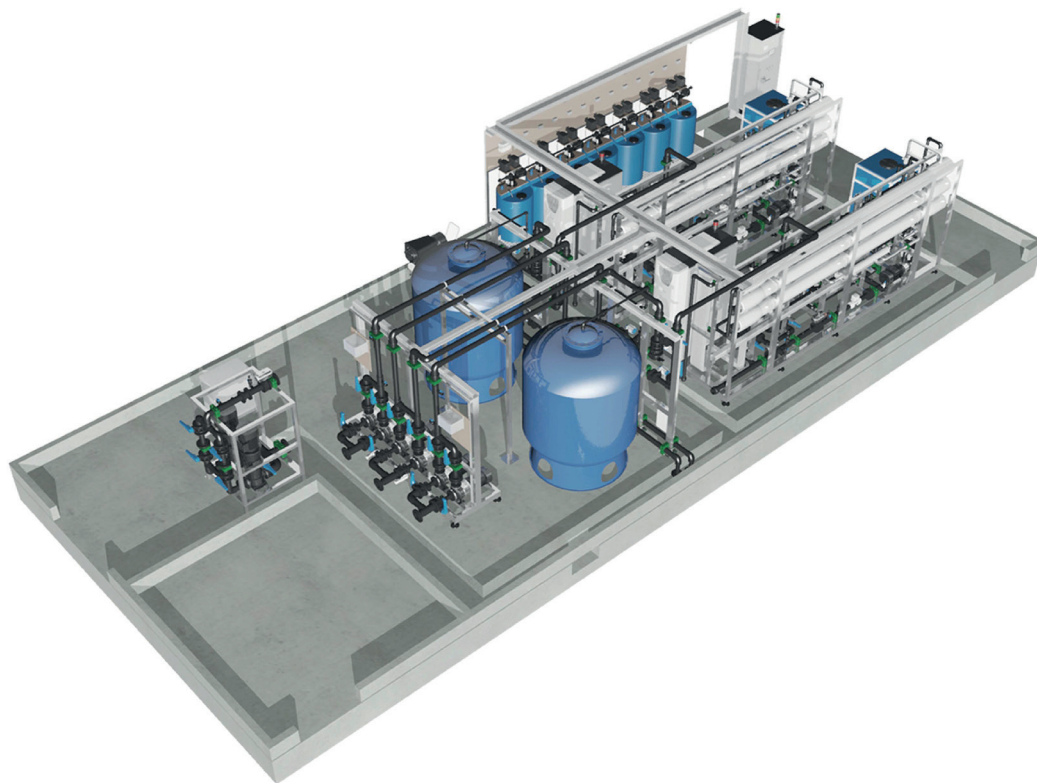
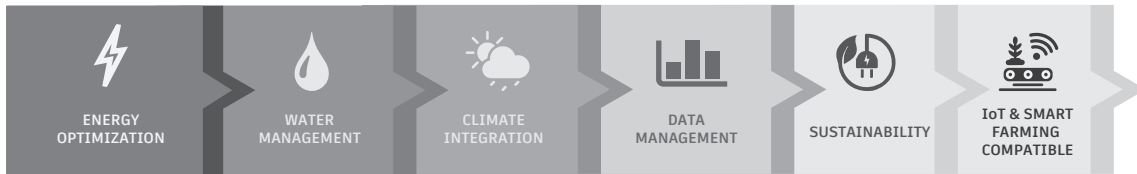


ELECTRICAL SPECIFICATION

ITEM	DESCRIPTION	CAPACITY		
		SERIE 8.0	SERIE P&P	SERIE 4.0
1	PUMPING CAPACITY UP TO	200 m3/h	50 m3/h	1.5 m3/h
2	FEED WATER TDS UP TO 42000 ppm.	✓	✓	✓
3	ENERGY RECOVERY DEVICE.	✓	✓	X
4	MEDIA FILTER.	X	✓	✓
5	5 micron CARTRIDGE FILTER.	✓	✓	✓
6	FRP MEMBRANE HOUSING.	✓	✓	✓
7	PERMEATE AND CONCENTRATE FLOW METER.	✓	✓	X
8	PRESSURE CONTROLS.	✓	✓	✓
9	PLC CONTROL PANEL.	✓	✓	✓
10	PROGRAMMABLE SET POINT.	✓	✓	✓
11	INLET WATER CONDUCTIVITY METER.	✓	✓	X
12	PERMEATE CONDUCTIVITY METER.	✓	✓	✓
13	ORP, pH AND TURBIDITY CONTROL.	X	✓	X
14	CHEMICAL DOSING.	✓	✓	X
15	MEMBRANE CLEANING SYSTEM.	✓	✓	X
16	DUPLEX STAINLESS STEEL PIPING.	✓	✓	✓
17	VFD MOTOR CONTROL.	✓	✓	X
18	AUTOMATIC FLUSHING.	✓	✓	X

EXTRA FEATURE

ITEM	DESCRIPTION	CAPACITY		
		SERIE 8.0	SERIE P&P	SERIE 4.0
1	UV STERILIZATION SYSTEM.	✓	✓	✓
2	OTHER VOLTAGE SUPPLY.	✓	✓	✓
3	ULTRAFILTRATION PRETREATMENT.	✓	✓	X
4	ORP AND PH CONTROL.	✓	X	✓
5	TURBIDITY CONTROL.	✓	X	X
6	CHEMICAL DOSING.	X	X	✓
7	MEDIA FILTER.	X	X	✓
8	VFD MOTOR CONTROL.	X	X	✓
9	AUTOMATIC FLUSHING.	X	X	✓
10	MEMBRANE CLEANING SYSTEM.	X	X	✓



All rights reserved by iSinitzan. Reproduction and distribution of any part of this document is prohibited.

iSii-Nitzan GmbH
 Via Cremignone 4C, Sorengo,
 Switzerland, CH 6924
 +(41) 765851837
 info@isii-nitzan.swiss
 www.isii-nitzan.swiss

More Information:



Versión: J2024-1

SERIES 8.0 SW

OPERATION SPECIFICATION - SERIES P&P SW

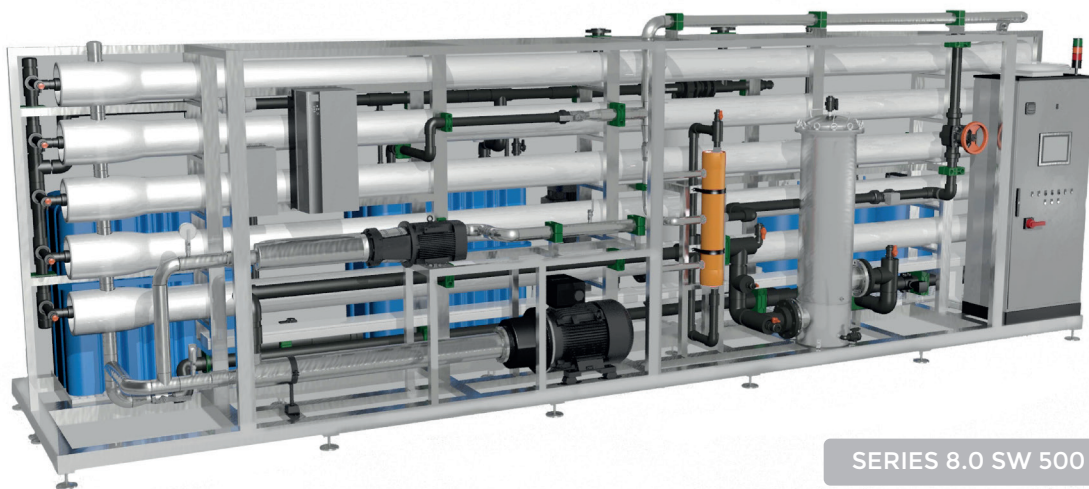
ITEM	FEATURE	CAPACITY
1	FEED WATER TEMPERATURE	2 / 42 °C
2	FEED WATER TDS	UP TO 42000 ppm
3	PH TOLERANCE RANGE	3-11
4	PLANT RECOVERY	UP TO 50%

TECHNICAL SPECIFICATION - SERIES 8.0 SW

MODEL	FLOW RATE (m3)	MEMBRANES 8"x40" QUANTITY	POWER (kW)	WEIGHT (kg)	DIMENSION LxWxH (m)
SW 50	2.5	4	11	850	5.00x1.20x2.25
SW 80	3.3	6	15	1200	5.00x1.20x2.25
SW 120	5	8	22	1650	5.00x1.20x2.25
SW 150	7	10	35	2000	6.00x1.40x2.25
SW 200	10	12	37	2250	6.00x1.40x2.25
SW 250	15	15	54	2600	6.00x1.60x2.25
SW 500	20	30	78	6000	8.50x2.00x2.30
SW 1200	50	80	200	8000	8.50x2.40x2.30
SW 2400	100	162	400	20000	8.50x2.40x2.30
SW 4800	200	324	800	40000	8.50x2.40x2.30



SERIES 8.0 SW 200

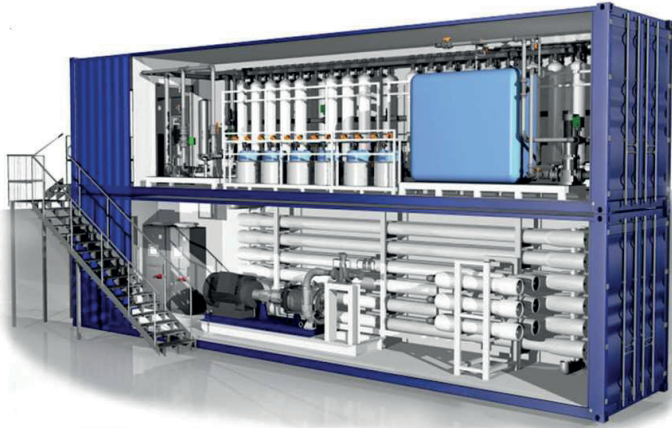


SERIES 8.0 SW 500

All rights reserved by iSinitzan. Reproduction and distribution of any part of this document is prohibited.

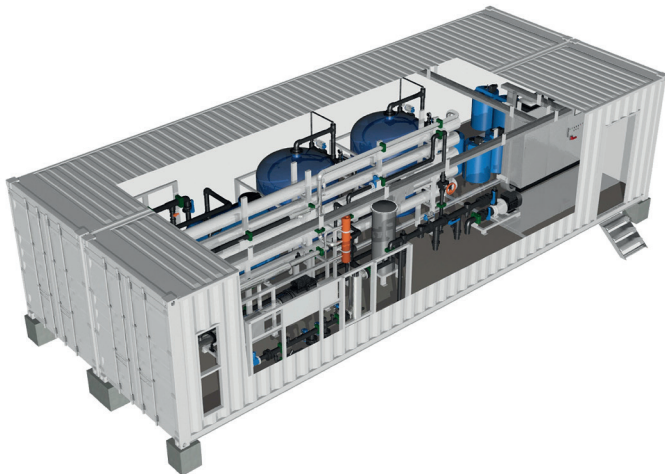


SERIES P&P SW



OPERATION SPECIFICATION - SERIES P&P SW

ITEM	FEATURE	CAPACITY
1	FEED WATER TEMPERATURE	2 / 42 °C
2	FEED WATER TDS	UP TO 42000 ppm
3	PH TOLERANCE RANGE	3-11
4	PLANT RECOVERY	UP TO 50%



TECHNICAL SPECIFICATION - SERIES P&P SW

MODEL	FLOW RATE (m3)	MEMBRANES 8"x40" QUANTITY	POWER (kW)	WEIGHT (kg)	CONTAINER
SW 50 P&P	2.5	4	11	3200	20' HC
SW 80 P&P	3.3	6	15	3500	20' HC
SW 120 P&P	5	8	22	4000	20' HC
SW 150 P&P	7	10	35	4500	20' HC
SW 200 P&P	10	12	37	6250	40' HC
SW 250 P&P	15	15	54	6600	40' HC
SW 500 P&P	20	30	78	10000	40' HC x 2
SW 1200 P&P	50	80	200	12000	40' HC x 2



SERIES 4.0 SW



OPERATION SPECIFICATION - SERIES 4.0 SW		
ITEM	FEATURE	CAPACITY
1	FEED WATER TEMPERATURE	2 / 42 °C
2	FEED WATER TDS	UP TO 42000 ppm
3	PH TOLERANCE RANGE	3-11
4	PLANT RECOVERY	UP TO 50%



TECHNICAL SPECIFICATION - SERIES 4.0 SW					
MODEL	FLOW RATE (m3)	MEMBRANES 8"x40" QUANTITY	POWER (kW)	WEIGHT (kg)	DIMENSION LxWxH (m)
SW 12	0.5	3	5.5	250	1.50x0.60x1.50
SW 24	1	6	5.5	325	1.50x0.60x1.50
SW 36	1.5	9	11	485	2.50x0.80x1.50

