

## TEMPERATURE TRANSMITTER TA2417



TECHNICAL SPECIFICATION		
ITEM	FEATURE	CAPACITY
1	OUTPUT SIGNAL	Analog signal (4 to 20 [mA])
2	PROCESS CONNECTION	Threaded connection (G 1/2)
3	MEASURING RANGE	-50 to 150 [°C]
4	COMMUNICATION INTERFACE	IO-Link
5	INSTALLATION LENGTH EL	50 [mm]

## TEMPERATURE CABLE SENSOR WITH BOLT-ON SENSOR TS2229



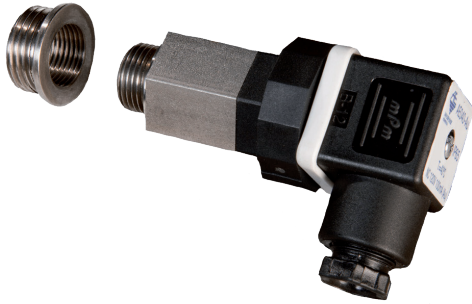
TECHNICAL SPECIFICATION		
ITEM	FEATURE	CAPACITY
3	MEASURING RANGE	-40 to 90 [°C] -40 to 194 [°F]
2	PROCESS CONNECTION	Bolt-on sensor 12 x 8,7 x 51 mm
5	SPECIAL FEATURE	Gold - plated contacts
4	MEASURING ELEMENT	1 x Pt 100
5	INSTALLATION	Surface mount RTD for solid bodies

## EVALUATION UNIT FOR PT100/PT1000 TEMPERATURE SENSORS TP3232



TECHNICAL SPECIFICATION		
ITEM	FEATURE	CAPACITY
1	OUTPUT SIGNAL	Analog signal (4 to 20 [mA])
2	MEASURING RANGE	-50 to 300 [°C] -58 to 572 [°F]
3	SPECIAL FEATURE	Gold - plated contacts
4	COMMUNICATION INTERFACE	IO-Link
5	APPLICATION	For Pt100 and Pt1000 measuring elements
6	CONNECTOR	1 x M12; coding: A





TECHNICAL SPECIFICATION		
ITEM	FEATURE	CAPACITY
1	OUTPUT SIGNAL	6-120 VAC, 5 - 100 [mA] 6-30 VDC, 5 - 100 [mA]
2	PROCESS CONNECTION	3/8" (F)
3	TEMPERATURE SETTING	40 or 60 [°C]
4	SWITCHING DELAY	1°C/min
5	OPTION	Adapter ring 3/8" x 1/2"

