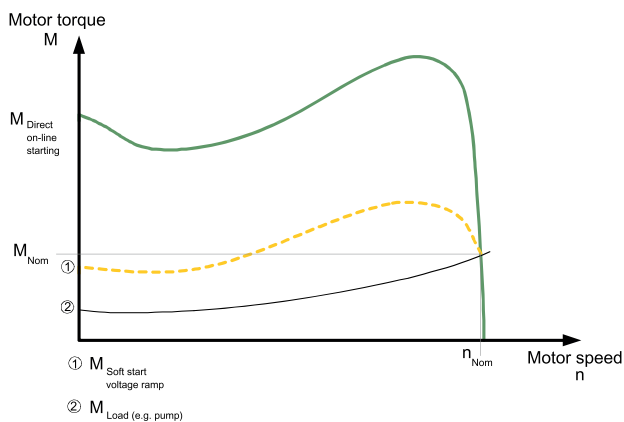
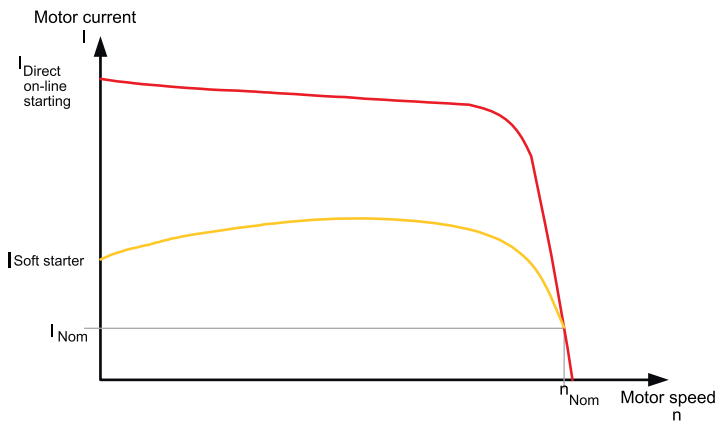


SIEMENS 3RW30/3RW40

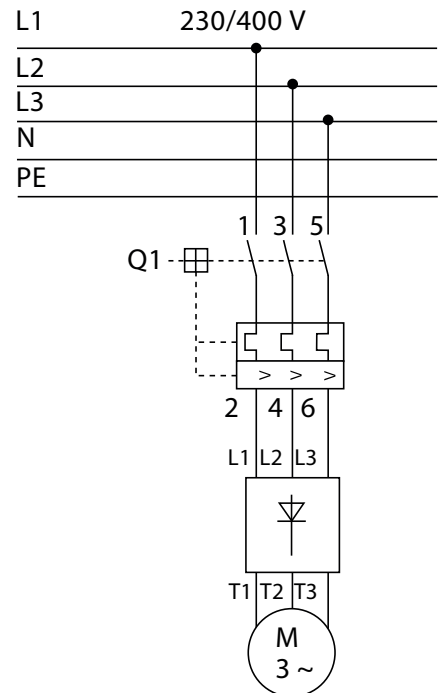


ITEM TECHNICAL CHARACTERISTICS

- 1 OPTIMAL ADAPTATION TO DRIVE TASKS WITH INDIVIDUAL POTENTIOMETERS
- 2 MINIMAL LOSSES DUE TO INTEGRATED BYPASS CONTACTS
- 3 SPACE-SAVING DESIGN IN ELECTRICAL CABINET
- 4 PERFECT MOTOR OVERLOAD PROTECTION
- 5 OPTIONAL MOTOR PROTECTION BY THERMISTOR
- 6 INTEGRATED INTRINSIC PROTECTION AGAINST STARTER OVERLOAD
- 7 SOFT START AND SOFT STOP FUNCTIONALITY (0...20 S)
- 8 ADJUSTABLE CURRENT LIMITATION FOR PRECISE CONTROL
- 9 CARE FOR MECHANICAL TRANSMISSION ELEMENTS DURING START-UP
- 10 EFFICIENT NETWORK PROTECTION AGAINST HIGH CURRENT PEAKS
- 11 OPTIMAL PROTECTION OF MOTOR AND LOAD AGAINST OVERLOADS



WIRING DIAGRAM





3RW30



3RW40



3RW44

SOFT STARTER 200-480 V				
MODEL	CURRENT	kW AT 230 V	kW AT 400 V	SIZE
3RW30 03-*CB54	3	0.55	1.1	S00
3RW30 13-*BB*4	3.6	0.75	1.5	S00
3RW30 14-*BB*4	6.5	1.5	3	S00
3RW30 16-*BB*4	9	2.2	4	S00
3RW30 17-*BB*4	12.5	3	5.5	S00
3RW30 18-*BB*4	17.6	4	7.5	S00
3RW30 26-*BB*4	25	5.5	11	S0
3RW30 27-*BB*4	32	7.5	15	S0
3RW30 28-*BB*4	38	11	18.5	S0
3RW30 36-*BB*4	45	11	22	S2
3RW30 37-*BB*4	63	18.5	30	S2
3RW30 38-*BB*4	72	22	37	S2
3RW30 46-*BB*4	80	22	45	S3
3RW30 47-*BB*4	106	30	55	S3
3RW40 24 -*BB*4	12.5	3	5.5	S0
3RW40 26 -*BB*4	25	5.5	11	S0
3RW40 27 -*BB*4	32	7.5	15	S0
3RW40 28 -*BB*4	38	11	18.5	S0
3RW40 36 -*BB*4	45	11	22	S2
3RW40 37 -*BB*4	63	18.5	30	S2
3RW40 38 -*BB*4	72	22	37	S2
3RW40 46 -*BB*4	80	22	45	S3
3RW40 47 -*BB*4	106	30	55	S3
3RW40 55-*BB*4	134	37	75	S6
3RW40 56-*BB*4	162	45	90	S6
3RW40 73-*BB*4	230	75	132	S12
3RW40 74-*BB*4	280	90	160	S12
3RW40 75-*BB*4	356	110	200	S12
3RW40 76-*BB*4	432	132	250	S12

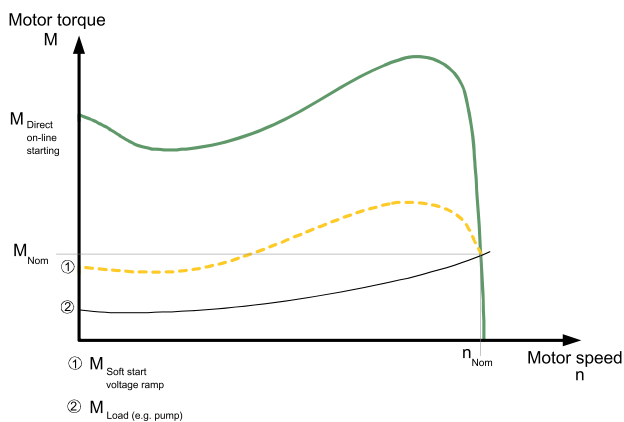
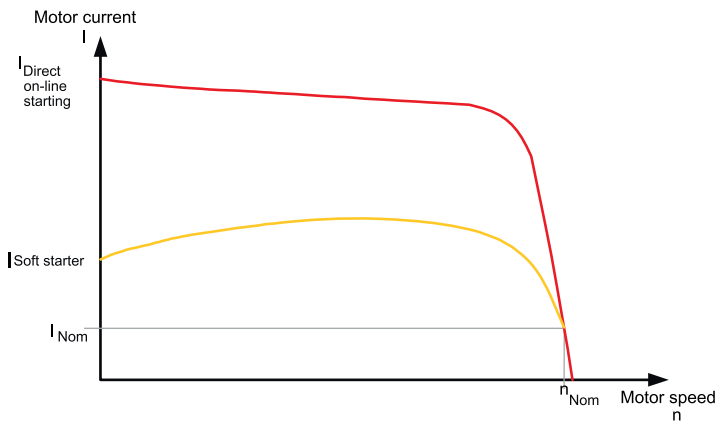


SCHNEIDER ATS01

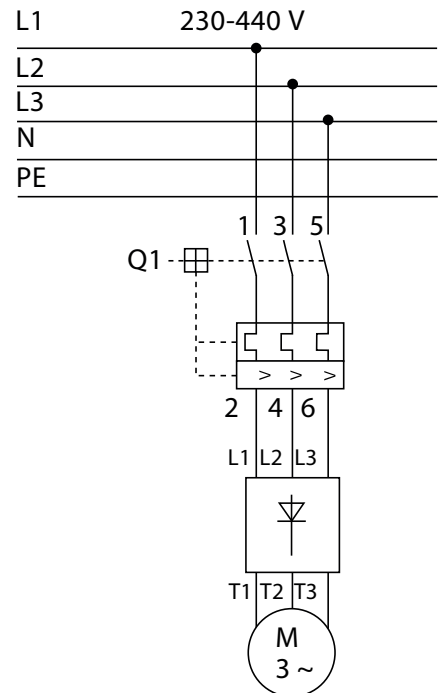


ITEM TECHNICAL CHARACTERISTICS

- 1 SMOOTH STARTING FOR PUMPS, FANS, COMPRESSORS, AND MACHINERY
- 2 EXTENDS SERVICE LIFE OF EQUIPMENT
- 3 PROGRESSIVE START ENSURES GRADUAL ACCELERATION
- 4 REDUCES HEARING DISCOMFORT DURING OPERATION
- 5 VERSATILE INSTALLATION OPTIONS SUITABLE FOR VARIOUS SETTINGS
- 6 REDUCES POWER SURGES AND ELECTRICAL STRESS ON MOTOR AND POWER SUPPLY
- 7 MINIMIZES VIBRATION AND STRAIN ON MECHANICAL COMPONENTS DURING START-UP
- 8 IMPROVES ENERGY EFFICIENCY BY AVOIDING PEAK LOADS ON START-UP
- 9 ENHANCES SAFETY BY ENSURING SMOOTH OPERATION
- 10 ENABLES PRECISE CONTROL OF STARTING AND STOPPING PARAMETERS FOR OPTIMIZED PERFORMANCE
- 11 COMPACT DESIGN FOR EASY INTEGRATION INTO EXISTING CONTROL SYSTEMS



WIRING DIAGRAM



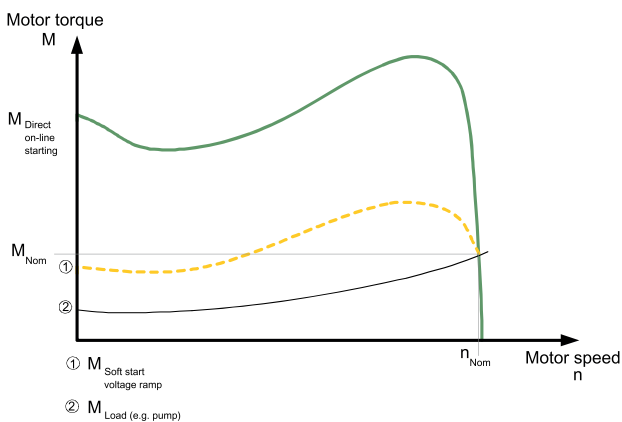
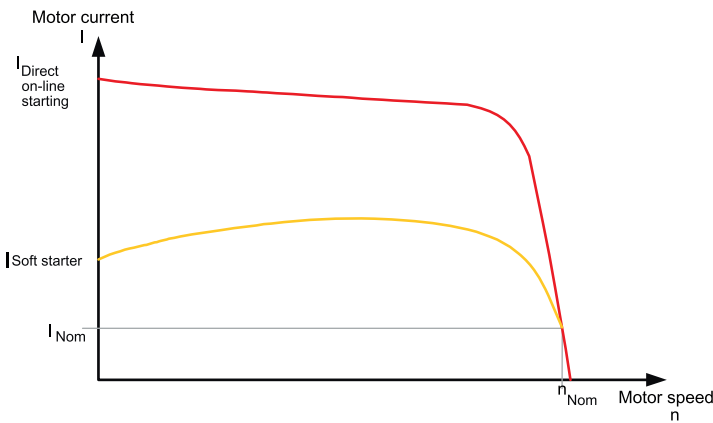
SOFT STARTER 1X230-3X240/380/440						
MODEL	CURRENT	KW 1X230V	KW 3X240V	KW 3X380V	KW 3X440V	
ATS01N103FT	3	0.37	0.37-0.55	-	0.5-1.5	
ATS01N106FT	6	0.75	0.75-1.1	-	2-3	
ATS01N109FT	9	1.1	1.5	-	5	
ATS01N112FT	12	1.5	2.2	-	7.5	
ATS01N125FT	25	2.2	3-4-5.5	-	10-15	
ATS01N206LU	6	-	0.75-1.1	-	-	
ATS01N209LU	9	-	1.5	-	-	
ATS01N212LU	12	-	2.2-3	-	-	
ATS01N222LU	22	-	4-5.5	-	-	
ATS01N232LU	32	-	7.5	-	-	
ATS01N206QN	6	-	-	1.5-2.2-3	-	
ATS01N209QN	9	-	-	4	-	
ATS01N212QN	12	-	-	5.5	-	
ATS01N222QN	22	-	-	7.5-11	-	
ATS01N232QN	32	-	-	15	-	
ATS01N206RT	6	-	-	-	0.75-1.5	
ATS01N209RT	9	-	-	-	4	
ATS01N212RT	12	-	-	-	5.5	
ATS01N222RT	22	-	-	-	7.5-11	
ATS01N232RT	32	-	-	-	15	
ATST01N206LT	6	-	0.75-1.1	1.5-2.2-3	-	
ATSU01N209LT	9	-	1.5	4	-	
ATSU01N212LT	12	-	2.2-3	5.5	-	
ATSU01N222LT	22	-	4-5.5	7.5-11	-	
ATSU01N232LT	32	-	7.5	15	-	



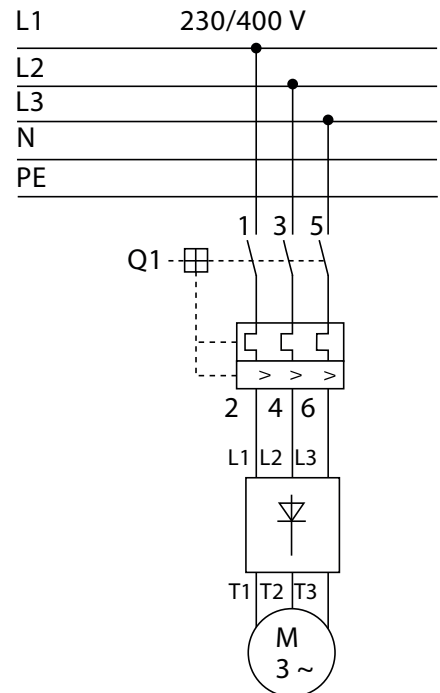


ITEM TECHNICAL CHARACTERISTICS

- 1 INCREASE YOUR MOTORS LIFETIME BY ELECTRICAL STRESSES PROTECTION
- 2 REDUCE YOUR INSTALLATION TIME AND PANEL SIZE
- 3 REDUCE THE NUMBER OF PRODUCTION STOPS
- 4 PERFECT MOTOR OVERLOAD PROTECTION
- 5 CURRENT LIMIT RAMP AND DUAL CURRENT LIMIT
- 6 LOCKED ROTOR PROTECTION
- 7 PROGRAMMABLE WARNING FUNCTIONS
- 8 ANALOG OUTPUT
- 9 MULTIPLE LANGUAGES
- 10 TORQUE CONTROL
- 11 AUTOMATIC PUMP CLEANING



WIRING DIAGRAM



SOFT STARTER 200-600 V

MODEL	CURRENT	KW AT 230 V	KW AT 400 V	KW AT 500 V
PSR3	3.9	0.75	1.5	2.2
PSR6	6.8	1.5	3	4
PSR9	9	2.2	4	4
PSR12	12	3	5.5	5.5
PSR16	16	4	7.5	7.5
PSR25	25	5.5	11	15
PSR30	30	7.5	15	18.5
PSR37	37	7.5	18.5	22
PSR45	45	11	22	30
PSR60	60	15	30	37
PSR72	72	22	37	45
PSR85	85	22	45	55
PSR105	105	30	55	55
PSRC3	3.9	-	1.5	-
PSRC6	6.8	-	3	-
PSRC9	9	-	4	-
PSRC12	12	-	5.5	-
PSRC16	16	-	7.5	-
PSRC25	25	-	11	-
PSRC30	30	-	15	-
PSRC37	37	-	18.5	-
PSRC45	45	-	22	-
PSRC60	60	-	30	-
PSRC72	72	-	37	-
PSRC85	85	-	45	-
PSRC105	105	-	55	-



ABBPSR



ABBPSRC

All rights reserved by iSinitzan. Reproduction and distribution of any part of this document is prohibited.

iSii-Nitzan GmbH
 Via Cremignone 4C, Sorengo,
 Switzerland, CH 6924
 +(41) 765851837
 info@isii-nitzan.swiss
 www.isii-nitzan.swiss

More Information:



Versión: J2024-1

SOFT STARTER 200-600 V

MODEL	CURRENT	kW AT 230 V	kW AT 400 V	kW AT 500 V
PSE18	18	4	7.5	11
PSE25	25	5.5	11	15
PSE30	30	7.5	15	18.5
PSE37	37	9	18.5	22
PSE45	45	11	22	30
PSE60	60	15	30	37
PSE72	72	18.5	37	45
PSE85	85	22	45	55
PSE105	106	30	55	75
PSE142	143	40	75	90
PSE170	171	45	90	110
PSE210	210	59	110	132
PSE250	250	75	132	160
PSE300	300	90	160	200
PSE370	370	110	200	250
PSTX30	30	-	15	18.5
PSTX37	37	-	18.5	22
PSTX45	45	-	22	25
PSTX60	60	-	30	37
PSTX72	72	-	37	45
PSTX85	85	-	45	55
PSTX105	106	-	55	75
PSTX142	143	-	75	90
PSTX170	171	-	90	110
PSTX210	210	-	110	132
PSTX250	250	-	132	160
PSTX300	300	-	160	200
PSTX370	370	-	200	257
PSTX470	470	-	250	315
PSTX570	570	-	315	400
PSTX720	720	-	400	500
PSTX840	840	-	450	600
PSTX1050	1050	-	560	730
PSTX1250	1250	-	710	880



ABBPSE



ABBPSTX

