

TUBE CLIP



TYPE A



TYPE B



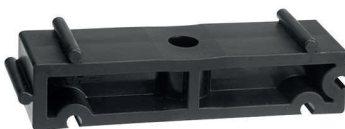
TYPE C

ART. CODE	DIAMETER	TYPE PACKING	BOLT
5.25.010	10A	500 (50x10)	35 x m4
5.25.012	12A	500 (50x10)	35 x m5
5.25.016	16B	400 (40x10)	35 x m5
5.25.020	20B	400 (40x10)	35 x m5
5.25.025	25B	800 (80x10)	35 x m5
5.25.032	32B	600 (60x10)	35 x m5
5.25.033	32C	400 (40x10)	35 x m6
5.25.040	40C	250 (25x10)	35 x m6
5.25.050	50C	250 (25x10)	35 x m6
5.25.063	63C	150 (15x10)	35 x m6
5.25.075	75C	80 (8x10)	35 x m6
5.25.090	90C	60 (6x10)	35 x m6
5.25.110	110C	50 (5x10)	35 x m6
5.25.125	125C	40 (4x10)	35 x m10
5.25.140	140C	20 (2x10)	35 x m10
5.25.160	160C	20 (2x10)	35 x m10

FILLING BLOCK



TYPE D



TYPE E

ART. CODE	DIAMETER	TYPE PACKING
2.24.011	10D	500 (50x10)
5.24.011	12D	500 (50x10)
5.24.016	16E	400 (40x10)
5.24.020	20E	400 (40x10)
5.24.025	25E	800 (80x10)
5.24.32	32E	600 (60x10)
5.24.33	32E	400 (40x10)
5.24.040	40E	250 (25x10)
5.24.050	50E	250 (25x10)
5.24.063	63E	150 (15x10)
5.24.075	75E	80 (8x10)
5.24.090	90E	100 (10x10)
5.24.110	110E	80 (8x10)
5.24.125	125E	150 (15x10)
5.24.140	140E	140 (14x10)
5.24.160	160E	120 (12x10)

All rights reserved by iSiiNitzan. Reproduction and distribution of any part of this document is prohibited.



TUBE CLAMP



ART. CODE	DIAMETER	PACKING	BOLT
5.26.090	90	60	20 x m6
5.26.110	110	40	20 x m6
5.26.125	125	40	25 x m10
5.26.140	140	40	25 x m10
5.26.160	160	20	25 x m10
5.26.180	180	10	25 x m10
5.26.200	200	10	30 x m10
5.26.225	225	10	30 x m10
5.26.250	250	10	30 x m10
5.26.280	280	10	30 x m10
5.26.315	315	10	30 x m10
5.26.355	355	10	35 x m10
5.26.400	400	10	35 x m10

CROSS



ART. CODE	d1	d2	Z	B	-	TYPE	PN	VERP
2.50.010	10	-	7	12	-	A	16	150 (3x50)
2.50.012	12	-	8	12	-	A	16	150 (3x50)
2.50.016	16	-	10	14	-	A	16	
2.50.020	20	-	11	16	-	A	16	
2.50.025	25	-	14	19	-	A	16	150
2.50.032	32	-	17	22	-	A	16	150
2.50.039	40	32	21	26		B	16	100
2.50.040	40	-	23	26	-	A	16	90
2.50.049	50	32	28	31		B	16	70
2.50.050	50	-	28	31	-	A	16	54
2.50.063	63	-	34	38	-	A	16	25
2.50.075	75	-	40	44	-	A	10	16
2.50.090	90	-	48	51	-	A	10	10
2.50.110	110	-	59	61	-	A	10	5



TEE 90°



ART. CODE	DIAMETER	PN	PACKING
2.01.010	10	16	250 (5x50)
2.01.012*	12	16	250 (5x50)
2.01.016*	16	16	200 (4x50)
2.01.020*	20	16	100 (2x50)
2.01.025*	25	16	250
2.01.032*	32	16	225
2.01.040*	40	16	125
2.01.050*	50	16	75
2.01.063*	63	16	38
2.01.075	75	16	24
2.01.090	90	16	14
2.01.110	110	16	7
2.01.125	125	16	4
2.01.140	140	16	2
2.01.160	160	16	2
2.01.200	200	10	1
2.01.225	225	10	1
2.01.250	250	10	1
2.01.280	280	10	1
2.01.315	315	10	1
2.01.400	400	6	1



REDUCING TEE 90°



ART. CODE	d1	d2	d3	PN	VERP
2.03.005	25	16		16	300
2.03.010	25	20		16	300
2.03.013	32	16		16	200
2.03.015	32	20		16	250
2.03.020	32	25		16	200
2.03.022	40	16		16	150
2.03.023	40	20		16	150
2.03.025	40	25		16	140
2.03.031	40	32		10	140
2.03.033	50	20		16	100
2.03.035	50	25		16	100
2.03.041	50	32		10	90
2.03.046	50	40		10	90
2.03.047	50	40	50	10	31
2.03.049	63	20		16	50
2.03.050	63	25		16	50
2.03.055	63	32		16	50
2.03.060	63	40		16	45
2.03.063	63	40	50	16	40
2.03.065	63	50		16	40
2.03.070	75	32		16	30
2.03.075	75	40		16	30
2.03.080	75	50		16	28
2.03.085	75	63		16	25
2.03.090	90	32		16	17
2.03.094	90	40		16	17

ART. CODE	d1	d2	d3	PN	VERP
2.03.095	90	50		16	17
2.03.097	90	63		16	15
2.03.100	90	75		16	14
2.03.105	110	32		16	9
2.03.107	110	40		16	9
2.03.110	110	50		16	9
2.03.111	110	63		16	9
2.03.112	110	75		16	8
2.03.115	110	90		16	8
2.03.130	140	50		16	4
2.03.135	140	75		16	4
2.03.137	140	90		16	4
2.03.140	140	110		16	4
2.03.153	160	75		16	2
2.03.154	160	90		16	2
2.03.155	160	110		16	3
2.03.156	160	125		16	2
2.03.165	200	110		10	1
2.03.170	200	160		10	1
2.03.185	225	110		10	1
2.03.190	225	160		10	1
2.03.205	250	160		10	1
2.03.210	250	200		10	1
2.03.245	315	160		10	1
2.03.250	315	225		10	1



TEE 90°



TYPE A



TYPE B



TYPE C

ART. CODE	d1	d2	PN	PACKING
2.05.015	20	3/4" (M)	16	250
2.05.020	25	3/4" (M)	16	300
2.05.025	25	1" (M)	16	250
2.05.030	32	3/4" (M)	16	200
2.05.035	32	1" (M)	16	200
2.05.046	32	1 1/4" (M)	10	225
2.05.060	40	1" (M)	16	125
2.05.066	40	1 1/4" (M)	10	140
2.05.071	40	1 1/2" (M)	10	130
2.05.075	50	1" (M)	16	90
2.05.081	50	1 1/4" (M)	10	90
2.05.086	50	1 1/2" (M)	10	90
2.05.090*	63	1" (M)	16	50
2.05.095*	63	1 1/4" (M)	16	45
2.05.100*	63	1 1/2" (M)	16	40
2.05.105*	63	2" (M)	16	40
2.05.110*	75	1 1/4" (M)	16	30
2.05.115*	75	1 1/2" (M)	16	30
2.05.120*	75	2" (M)	16	28

ART. CODE	d1	d2	PN	PACKING
2.05.041	1" (M)	32	10	250
2.05.051	1 1/4" (M)	32	10	175
2.05.067	1 1/4" (M)	40	10	150

ART. CODE	d1	d2	PN	PACKING
2.05.056	1 1/4" (M)	-	10	175

All rights reserved by iSinitzan. Reproduction and distribution of any part of this document is prohibited.



TEE 90°



ART. CODE	Ø	DN	PACKING
01523	90-3/4"	80	10
01524	90-1"	80	10
01525	110-1"	100	8
01526	125-1"	110	5
01531	160-2"	150	3
01532	200-2"	175	1



ART. CODE	Ø	DN	PACKING
01510	63-1/2"	80	10
01511	63-3/4"	80	10
01512	90-3/4"	80	10
01513	90-1"	80	10
01514	110-3/4"	100	10
01515	110-1"	100	10

TEE 90° 4 WAYS



ART. CODE	Ø	DN	PACKING
01304	50	40	30
01305	63	50	20
01306	75	65	4

All rights reserved by iSiiNitzan. Reproduction and distribution of any part of this document is prohibited.



ELBOW 90°



ART. CODE	d1	PN	VERP
2.25.010	10	16	250 (5x50)
2.25.012*	12	16	250 (5x50)
2.25.016*	16	16	250 (5x50)
2.25.020*	20	16	200 (4x50)
2.25.025*	25	16	350
2.25.032*	32	16	250
2.25.040*	40	16	175
2.25.050*	50	16	100
2.25.063*	63	16	50
2.25.075	75	16	30
2.25.090	90	16	17
2.25.110	110	16	12
2.25.125	125	16	6
2.25.140	140	16	5
2.25.160	160	16	2
2.25.225	225	10	1
2.25.250	250	10	1
2.25.280	280	10	1
2.25.315	315	10	1
2.25.400	400	6	1



ART. CODE	d1	d2	PN	PACKING
2.29.010	20	3/4" (M)	16	200
2.29.020	25	1" (M)	16	350
2.29.030	32	3/4" (M)	10	250
2.29.040	32	1" (M)	10	250
2.29.051	32	1 1/4" (M)	10	250
2.29.061	40	1 1/4" (M)	10	200
2.29.071	40	1 1/2" (M)	10	175
2.29.081	50	1 1/4" (M)	10	150
2.29.091	50	1 1/2" (M)	10	125
2.29.101	50	2" (M)	10	100

All rights reserved by iSinitzan. Reproduction and distribution of any part of this document is prohibited.



ELBOW 90°



ART. CODE	d1	d2	PN	PACKING
2.35.016	16	3/8" (F)	10	200
2.35.020	20	1/2" (F)	10	200
2.35.025	25	3/4" (F)	10	300
2.35.032	32	1" (F)	10	100
2.35.040	40	1 1/4" (F)	10	100
2.35.050	50	1 1/2" (F)	10	100
2.35.063	63	2" (F)	10	50

ELBOW 90° (REDUCING)



ART. CODE	d1	d2	PN	PACKING
2.26.011	40	32	10	200
2.26.021	50	32	10	150
2.26.031	50	40	10	135
2.26.032	50	40	10	100
2.26.042	63	50	10	50



ELBOW 90°



ART. CODE	Ø	Ø s/air	DN	PACKING
01630	50	20	40	30
01627	50	25	40	30
01631	63	20	50	26
01628	63	25	50	26
01632	75	20	65	25
01629	75	25	65	25
01633	90	25	80	10
01635	110	32	100	10
01636	125	32	110	6
01637	125	63	110	6
01639	160	63	150	4
01640	200	63	175	2



ART. CODE	Ø	Ø s/air	DN	PACKING
02270	50-1 1/2"	1/2"	40	30
02271	50-1 1/2"	3/4"	40	30
02273	63-2"	1/2"	50	26
02274	63-2"	3/4"	50	26



ART. CODE	Ø	Ø s/air	DN	PACKING
02280	50-1 1/2"	1/2"	40	30
02281	50-1 1/2"	3/4"	40	30
02283	63-2"	1/2"	50	26
02284	63-2"	3/4"	50	26

All rights reserved by iSiiNitzan. Reproduction and distribution of any part of this document is prohibited.



ELBOW 90°



ART. CODE	Ø	Ø s/air	DN	PACKING
01256	50	1/2"	40	30
01590	50	3/4"	40	30
01257	63	1/2"	50	26
01591	63	3/4"	50	26
01258	75	1/2"	65	25
01592	75	3/4"	65	25
01259	90	3/4"	80	10
01260	90	1"	80	10
01261	110	1"	100	10
01262	125	1"	110	6
01263	125	2"	110	6
01267	160	2"	150	4
01268	200	2"	175	2
01593	250	2"	225	1
01594	250	3"	225	1



ART. CODE	Ø	Ø s/air	DN	PACKING
01650	50	20	40	30
01651	63	20	50	30
01652	75	20	65	25



ART. CODE	Ø	Ø s/air	DN	PACKING
01615	50	1/2"	40	30
01613	50	3/4"	40	30
01616	63	1/2"	50	30
01614	63	3/4"	50	30
01617	75	1/2"	65	25

All rights reserved by iSinitzan. Reproduction and distribution of any part of this document is prohibited.



ELBOW 90° 3 WAYS



ART. CODE	Ø	DN	PACKING
01316	50	40	30
01317	63	50	20

ELBOW 45°



ART. CODE	d	PN	VERP
2.30.010	10	16	150 (3x50)
2.30.012*	12	16	150 (3x50)
2.30.016*	16	16	150 (3x50)
2.30.020*	20	16	150 (3x50)
2.30.025*	25	16	150
2.30.032*	32	16	300
2.30.040*	40	16	150
2.30.050*	50	16	75
2.30.063*	63	16	65
2.30.075	75	16	35
2.30.090	90	16	24
2.30.110	110	16	12
2.30.125	125	16	6
2.30.140	140	16	6
2.30.160	160	16	2
2.30.200	200	10	1
2.30.225	225	10	1
2.30.250	250	10	1
2.30.280	280	10	1
2.30.315	315	10	1
2.30.400	400	6	1

All rights reserved by iSinitzan. Reproduction and distribution of any part of this document is prohibited.



REDUCING BUSH



ART. CODE	d1	d2	d3	TYPE	PN	PACKING
3.10.016	-	16	1/4" (F)	A	16	250
3.10.020	-	20	1/4" (F)	A	16	250
3.10.021	-	20	3/8" (F)	A	16	250
3.10.025	-	25	3/8" (F)	A	16	250
3.10.026	-	25	1/2" (F)	A	16	250
3.10.032	-	32	1/2" (F)	A	16	250
3.10.033	-	32	3/4" (F)	A	16	250
3.10.039	-	40	1/2" (F)	A	16	200
3.10.040	-	40	3/4" (F)	A	16	100
3.10.041	-	40	1" (F)	A	16	100
3.10.048	-	50	1/2" (F)	A	16	100
3.10.049	-	50	3/4" (F)	A	16	100
3.10.050	-	50	1" (F)	A	16	100
3.10.051	-	50	1 1/4" (F)	A	16	100
3.10.060	-	63	1/2" (F)	A	16	100
3.10.061	-	63	3/4" (F)	A	16	100
3.10.062	-	63	1" (F)	A	16	100
3.10.063	-	63	1 1/4" (F)	A	16	100
3.10.064	-	63	1 1/2" (F)	A	16	100
3.10.074	-	75	1/4" (F)	A	16	50
3.10.075	-	75	1 1/2" (F)	A	16	50
3.10.076	-	75	2" (F)	A	16	50
3.10.090	75	90	2" (F)	A	16	50
3.10.091	-	90	2 1/2" (F)	A	16	50
3.10.092	75	90	3" (F)	C	10	24
3.10.110	90	110	2" (F)	A	16	25
3.10.111	90	110	2 1/2" (F)	A	16	25
3.10.112	-	110	3" (F)	A	16	25
3.10.113	-	110	4" (F)	C	10	25
3.10.125	-	125	3" (F)	A	10	25
3.10.126	-	125	4" (F)	A	10	25
3.10.160	-	160	5" (F)	B	16	8
3.10.200	-	200	6" (F)	B	10	10



REDUCING BUSH



ART.CODE	d1	d2	TYPE	PN	VERP
3.05.016	16	12	A	16	250
3.05.018	20	10	A	16	250
3.05.019	20	12	A	16	250
3.05.020	20	16	A	16	250
3.05.024	25	12	B	16	250
3.05.025	25	16	A	16	250
3.05.026	25	20	A	16	250
3.05.032	32	16	B	16	250
3.05.033	32	20	B	16	250
3.05.034	32	25	A	16	250
3.05.040	40	16	B	16	200
3.05.041	40	20	B	16	200
3.05.042	40	25	B	16	200
3.05.043	40	32	A	16	200
3.05.050	50	20	B	16	200
3.05.051	50	25	B	16	200
3.05.052	50	32	B	16	200
3.05.053	50	40	A	16	200
3.05.063	63	25	B	16	200
3.05.064	63	32	B	16	200
3.05.065	63	40	B	16	200
3.05.066	63	50	A	16	200
3.05.075	75	32	B	16	100
3.05.076	75	40	B	16	100
3.05.077	75	50	B	16	100
3.05.078	75	63	A	16	100
3.05.090	90	50	B	16	50
3.05.091	90	63	B	16	50
3.05.092	90	75	A	16	50
3.05.095	90	80	A	16	50
3.05.110	110	50	B	16	25
3.05.111	110	63	B	16	25
3.05.112	110	75	B	16	25
3.05.113	110	90	A	16	25
3.05.115	110	100	A	16	25
3.05.125	125	75	B	16	24
3.05.126	125	90	B	16	24
3.05.127	125	110	A	16	24

ART.CODE	d1	d2	TYPE	PN	VERP
3.05.140	140	75	B	16	15
3.05.141	140	90	B	16	15
3.05.142	140	110	B	16	15
3.05.143	140	125	A	16	15
3.05.160	160	90	B	16	8
3.05.161	160	110	B	16	8
3.05.162	160	125	A	16	8
3.05.163	160	140	A	16	8
3.05.197	200	110	B	10	6
3.05.198	200	125	B	10	6
3.05.199	200	140	B	10	6
3.05.200	200	160	A	10	6
3.05.221	225	125	B	10	3
3.05.222	225	110	B	10	3
3.05.223	225	140	B	10	3
3.05.224	225	160	B	10	3
3.05.225	225	200	A	10	3
3.05.247	250	125	B	10	3
3.05.248	250	140	B	10	3
3.05.249	250	160	B	10	3
3.05.250	250	200	A	10	3
3.05.251	250	225	A	10	3
3.05.276	280	140	B	10	2
3.05.277	280	160	B	10	2
3.05.278	280	200	B	10	2
3.05.279	280	225	A	10	2
3.05.280	280	250	A	10	2
3.05.313	315	160	B	10	2
3.05.314	315	200	B	10	2
3.05.315	315	225	B	10	1
3.05.316	315	250	A	10	2
3.05.317	315	280	A	10	2
3.05.350	355	315	A	6	1
3.05.400	400	250	B	6	1
3.05.402	400	280	B	6	1
3.05.403	400	315	A	6	1
3.05.405	400	355	A	6	1

All rights reserved by iSiiNitzan. Reproduction and distribution of any part of this document is prohibited.

iSii-Nitzan GmbH
 Via Cremignone 4C, Sorengo,
 Switzerland, CH 6924
 +(41) 765851837
 info@isii-nitzan.swiss
 www.isii-nitzan.swiss

More Information:



Versión: J2024-1

ADAPTOR NIPPLE

ART. CODE	d1	d2	d3	PN	PACKING
3.15.010	10	16	1/4" (M)	16	250
3.15.020	12	16	1/4" (M)	16	250
3.15.030	16	23*	1/4" (M)	16	250
3.15.035	16	23*	3/8" (M)	16	250
3.15.040	16	23*	1/2" (M)	16	250
3.15.045	20	28*	3/8" (M)	16	250
3.15.050	20	28*	1/2" (M)	16	250
3.15.055	20	28*	3/4" (M)	16	250
3.15.060	25	32	1/2" (M)	16	300
3.15.065	25	32	3/4" (M)	16	300
3.15.070	25	32	1" (M)	16	300
3.15.075	32	40	1/2" (M)	16	250
3.15.080	32	40	3/4" (M)	16	300
3.15.085	32	40	1" (M)	16	300
3.15.090	32	40	1 1/4" (M)	16	300
3.15.092	40	50	1/2" (M)	16	225
3.15.093	40	50	3/4" (M)	16	225
3.15.095	40	50	1" (M)	16	225
3.15.100	40	50	1 1/4" (M)	16	200
3.15.105	40	50	1 1/2" (M)	16	175
3.15.110	50	63	1" (M)	16	150
3.15.115	50	63	1 1/4" (M)	16	150
3.15.120	50	63	1 1/2" (M)	16	150
3.15.125	50	63	2" (M)	16	150
3.15.130	63	75	1 1/4" (M)	16	80
3.15.135	63	75	1 1/2" (M)	16	80
3.15.140	63	75	2" (M)	16	80
3.15.145	63	75	2 1/2" (M)	16	90
3.15.150	75	90	2" (M)	16	48
3.15.155	75	90	2 1/2" (M)	16	48
3.15.160	75	90	3" (M)	16	48
3.15.165	90	110	2 1/2" (M)	16	27
3.15.170	90	110	3" (M)	16	27
3.15.175	90	110	4" (M)	16	27
3.15.180	110	132*	3" (M)	16	20
3.15.185	110	132*	4" (M)	16	18



ART. CODE	d1	d2	d3	PN	PACKING
3.30.010	-	16	1/4" (M)	16	100
3.30.011	-	16	3/8" (M)	16	100
3.30.012	-	16	1/2" (M)	16	100
3.30.015	-	20	3/8" (M)	16	100
3.30.016	-	20	1/2" (M)	16	100
3.30.017	-	20	3/4" (M)	16	100
3.30.020	-	25	1/2" (M)	16	100
3.30.025	-	25	3/4" (M)	16	100
3.30.030	-	25	1" (M)	16	100
3.30.040	25	32	3/4" (M)	16	100
3.30.045	25	32	1" (M)	16	100
3.30.046	25	32	1 1/4" (M)	16	100
3.30.050	-	40	1" (M)	16	100
3.30.055	-	40	1 1/4" (M)	16	100
3.30.060	-	50	1 1/4" (M)	16	100
3.30.065	-	50	1 1/2" (M)	16	100
3.30.070	-	63	1 1/4" (M)	16	100
3.30.075	-	63	1 1/2" (M)	16	100
3.30.080	-	63	2" (M)	16	100



All rights reserved by iSinitzan. Reproduction and distribution of any part of this document is prohibited.

iSii-Nitzan GmbH

Via Cremignone 4C, Sorengo,
Switzerland, CH 6924

+(41) 765851837

info@isii-nitzan.swiss

www.isii-nitzan.swiss

More Information:



Versión: J2024-1

ADAPTOR NIPPLE

ART. CODE	d1	d2	d3	TYPE	PN	PACKING
1.40.010	25	-	1/2" (M)	A	16	300
1.40.015	25	-	3/4" (M)	A	16	300
1.40.025	32	-	1/2" (M)	A	10	400
1.40.030	32	-	3/4" (M)	A	16	350
1.40.035	32	-	1" (M)	A	16	300
1.40.045	40	-	1" (M)	A	16	300
1.40.050	40	-	1 1/4" (M)	A	16	300
1.40.060	50	-	1 1/4" (M)	A	16	200
1.40.065	50	-	1 1/2" (M)	A	16	200
1.40.075	63	-	1 1/4" (M)	A	10	100
1.40.080	63	-	1 1/2" (M)	A	16	100
1.40.085	63	-	2" (M)	A	16	100
1.40.095	75	-	1 1/4" (M)	A	10	75
1.40.100	75	-	1 1/2" (M)	A	10	75
1.40.105	75	-	2" (M)	A	16	75
1.40.110	75	-	2 1/2" (M)	A	16	80
1.40.120	90	-	2" (M)	A	10	45
1.40.125	90	-	2 1/2" (M)	A	16	55
1.40.130	90	-	3" (M)	A	16	36
1.40.140	110	-	2 1/2" (M)	A	10	24
1.40.145	110	-	3" (M)	A	16	32
1.40.150	110	-	4" (M)	A	16	27
1.40.155	125	-	3" (M)	A	16	24
1.40.160	125	-	4" (M)	A	16	24
1.40.167	140	-	4" (M)	A	16	12
1.40.168	140	-	5" (M)	A	16	12
1.40.170	160	-	4" (M)	A	16	8
1.40.175	160	-	5" (M)	A	16	8
1.40.180	160	-	6" (M)	A	16	8
1.40.185	200	-	6" (M)	A	10	4
1.40.190	200	-	8" (M)	A	10	1
1.40.020	25	32	1" (M)	B	16	300
1.40.040	32	40	1 1/4" (M)	B	16	300
1.40.055	40	48	1 1/2" (M)	B	16	300
1.40.070	50	60	2" (M)	B	16	200
1.40.090	63	75	2 1/2" (M)	B	16	100
1.40.115	75	90	3" (M)	B	16	50
1.40.135	90	110	4" (M)	B	16	24
1.40.165	125	140	5" (M)	B	16	18
1.40.169	140	160	6" (M)	B	16	10

TYPE A



TYPE B



NIPPLE TYPE 2



ART. CODE	d1	d2	PN	PACKING
3.35.040	3/8"(M)	1/4" (M)	16	100
3.35.050	1/2"(M)	3/8"(M)	16	100
3.35.060	3/4"(M)	1/2" (M)	16	100
3.35.070	1" (M)	3/4" (M)	16	100
3.35.080	1 1/4"(M)	1" (M)	16	100
3.35.090	1 1/2"(M)	1 1/4" (M)	16	100
3.35.100	2" (M)	1 1/2" (M)	16	100

REDUCING RING



ART. CODE	d1	d2	PN	PACKING
3.11.024	3/4"(M)	1/4"(F)	16	100
3.11.025	3/4"(M)	3/8"(F)	16	100
3.11.031	1"(M)	3/8"(F)	16	100
3.11.032	1"(M)	1/2"(F)	16	100
3.11.039	1 1/4" (M)	1/2" (F)	16	100
3.11.040	1 1/4" (M)	3/4"(F)	16	100
3.11.049	1 1/2" (M)	3/4" (F)	16	100
3.11.050	1 1/2" (M)	1"(F)	16	100
3.11.062	2"(M)	1"(F)	16	100
3.11.063	2"(M)	1 1/4" (F)	16	100
3.11.064	2"(M)	1 1/2" (F)	16	100
3.11.074	2 1/2" (M)	1 1/4" (F)	16	50
3.11.075	2 1/2" (M)	1 1/2" (F)	16	50
3.11.076	2 1/2" (M)	2"(F)	16	50
3.11.089	3"(M)	1 1/2"(F)	16	50
3.11.090	3"(M)	2"(F)	16	50
3.11.091	3"(M)	2 1/2" (F)	16	50



ADAPTOR SOCKET



ART. CODE	d1	d3	PN	PACKING
3.25.010	12	1/4" (F)	16	100
3.25.013	16	1/4" (F)	16	100
3.25.015	16	3/8" (F)	10	100
3.25.017	20	1/4" (F)	16	50
3.25.018	20	3/8" (F)	16	100
3.25.020	20	1/2" (F)	10	100
3.25.026	25	1/2" (F)	16	100
3.25.028	25	3/8" (F)	16	50
3.25.030	25	3/4" (F)	10	100
3.25.036	32	1/2" (F)	16	100
3.25.041	32	3/4" (F)	16	100
3.25.045	32	1" (F)	10	100
3.25.048	40	3/4" (F)	10	150
3.25.051	40	1" (F)	16	100
3.25.055	40	1 1/4" (F)	10	100
3.25.058	50	1" (F)	10	100
3.25.061	50	1 1/4" (F)	16	100
3.25.065	50	1 1/2" (F)	10	100
3.25.067	63	1 1/4" (F)	10	50
3.25.069	63	1 1/2" (F)	16	50
3.25.070	63	2" (F)	10	50
3.25.076	75	1 1/2" (F)	10	40
3.25.078	75	2" (F)	10	45

ART. CODE	d1	d3	PN	PACKING
3.25.016	16	3/8" (F)	16	50
3.25.021	20	1/2" (F)	16	50
3.25.031	25	3/4" (F)	16	50
3.25.046	32	1" (F)	16	50
3.25.049	40	3/4" (F)	16	50
3.25.056	40	1 1/4" (F)	16	50
3.25.059	50	1" (F)	16	75
3.25.066	50	1 1/2" (F)	16	50
3.25.067.1	63	1 1/4" (F)	16	50
3.25.071	63	2" (F)	16	25
3.25.077	75	1 1/2" (F)	16	40
3.25.079	75	2" (F)	16	35
3.25.081	75	2 1/2" (F)	10	40
3.25.091	90	3" (F)	10	24
3.25.101	110	4" (F)	10	15

All rights reserved by iSiiNitzan. Reproduction and distribution of any part of this document is prohibited.



ADAPTOR SOCKET



TYPE A



TYPE B



TYPE C



TYPE D

ART. CODE	d1	d3	TYPE	PN	PACKING
3.26.010	1/4" (F)	1/4" (F)	A	16	100
3.26.012	1/4" (F)	3/8" (F)	A	10	100
3.26.015	3/8" (F)	3/8" (F)	A	10	100
3.26.017	3/8" (F)	1/2" (F)	A	10	100
3.26.019	1/4" (F)	1/2" (F)	A	10	50
3.26.020	1/2" (F)	1/2" (F)	A	10	100
3.26.021.1	3/8" (F)	3/4" (F)	A	10	50
3.26.022	1/2" (F)	3/4" (F)	A	10	100
3.26.025	3/4" (F)	3/4" (F)	A	10	100
3.26.027	1/2" (F)	1" (F)	A	10	100
3.26.028	3/4" (F)	1" (F)	A	10	100
3.26.030	1" (F)	1" (F)	A	10	100
3.26.032	3/4" (F)	1 1/4" (F)	A	10	150
3.26.033	1" (F)	1 1/4" (F)	A	10	150
3.26.035	1 1/4" (F)	1 1/4" (F)	A	10	100
3.26.037	1" (F)	1 1/2" (F)	A	10	100
3.26.038	1 1/4" (F)	1 1/2" (F)	A	10	100
3.26.040	1 1/2" (F)	1 1/2" (F)	A	10	100
3.26.042	1 1/4" (F)	2" (F)	A	10	60
3.26.043	1 1/2" (F)	2" (F)	A	10	50
3.26.045	2" (F)	2" (F)	A	10	25
3.26.013	1/4" (F)	3/8" (F)	B	16	50
3.26.018	3/8" (F)	1/2" (F)	B	16	50
3.26.019.1	1/4" (F)	1/2" (F)	B	16	50

ART. CODE	d1	d3	TYPE	PN	PACKING
3.26.021.2	3/8" (F)	3/4" (F)	B	16	50
3.26.023	1/2" (F)	3/4" (F)	B	16	50
3.26.016	3/8" (F)	3/8" (F)	C	16	50
3.26.021	1/2" (F)	1/2" (F)	C	16	50
3.26.026	3/4" (F)	3/4" (F)	C	16	50
3.26.027.1	1/2" (F)	1" (F)	C	16	50
3.26.029	3/4" (F)	1" (F)	C	16	75
3.26.031	1" (F)	1" (F)	C	16	50
3.26.032.1	3/4" (F)	1 1/4" (F)	C	16	50
3.26.034	1" (F)	1 1/4" (F)	C	16	50
3.26.036	1 1/4" (F)	1 1/4" (F)	C	16	50
3.26.037.1	1" (F)	1 1/2" (F)	C	16	75
3.26.039	1 1/4" (F)	1 1/2" (F)	C	16	75
3.26.041	1 1/2" (F)	1 1/2" (F)	C	16	50
3.26.042.1	1 1/4" (F)	2" (F)	C	16	50
3.26.044	1 1/2" (F)	2" (F)	C	16	50
3.26.046	2" (F)	2" (F)	C	16	25
3.26.049	1 1/2" (F)	2 1/2" (F)	C	10	25
3.26.050	2" (F)	2 1/2" (F)	C	10	25
3.26.051	2 1/2" (F)	2 1/2" (F)	C	10	40
3.26.066	3" (F)	3" (F)	C	10	25
3.26.071	4" (F)	4" (F)	C	10	15
1.25.055	5" (F)	5" (F)	D	10	10
1.25.060	6" (F)	6" (F)	D	10	10



ADAPTOR SOCKET



TYPE A



TYPE B

ART. CODE	d1	d2	d3	TYPE	PN	PACKING
3.27.010	10	16	1/4" (F)	A	16	100
3.27.015	12	16	3/8" (F)	A	10	100
3.27.017	-	20	1/2" (F)	A	10	100
3.27.020	16	25	1/2" (F)	A	10	100
3.27.025	20	32	3/4" (F)	A	10	100
3.27.032	25	32	1" (F)	A	10	200
3.27.040	32	40	1 1/4" (F)	A	10	100
3.27.050	40	50	1 1/2" (F)	A	10	75
3.27.063	50	63	2" (F)	A	10	60
3.27.016	12	16	3/8" (F)	B	16	50
3.27.018	-	20	1/2" (F)	B	16	50
3.27.021	16	25	1/2" (F)	B	16	50
3.27.026	20	32	3/4" (F)	B	16	50
3.27.033	25	32	1" (F)	B	16	75
3.27.041	32	40	1 1/4" (F)	B	16	100
3.27.051	40	50	1 1/2" (F)	B	16	75
3.27.064	50	63	2" (F)	B	16	25
3.27.076	63	75	2 1/2" (F)	B	10	25



ADAPTOR SOCKET



ART. CODE	d1	d3	PN	PACKING
3.28.010	3/8" (M)	1/4" (F)	16	100
3.28.015	1/4" (M)	3/8" (F)	10	100
3.28.017	1/2" (M)	3/8" (F)	10	100
3.28.020	3/8" (M)	1/2" (F)	10	100
3.28.021.1	1/2" (M)	1/2" (F)	10	50
3.28.022	3/4" (M)	1/2" (F)	10	100
3.28.025	1/2" (M)	3/4" (F)	10	100
3.28.026.1	3/4" (M)	3/4" (F)	10	50
3.28.027	1" (M)	3/4" (F)	10	100
3.28.032	3/4" (M)	1" (F)	10	100
3.28.034	1" (M)	1" (F)	10	90
3.28.036	1 1/4" (M)	1" (F)	10	150
3.28.040	1" (M)	1 1/4" (F)	10	150
3.28.042	1 1/4" (M)	1 1/4" (F)	10	150
3.28.044	1 1/2" (M)	1 1/4" (F)	10	150
3.28.050	1 1/4" (M)	1 1/2" (F)	10	100
3.28.052	1 1/2" (M)	1 1/2" (F)	10	100
3.28.063	1 1/2" (M)	2" (F)	10	50
3.28.065	2" (M)	2" (F)	10	50

ART. CODE	d1	d3	PN	PACKING
3.28.016	1/4" (M)	3/8" (F)	16	50
3.28.018	1/2" (M)	3/8" (F)	16	50
3.28.021	3/8" (M)	1/2" (F)	16	50
3.28.021.2	1/2" (M)	1/2" (F)	16	50
3.28.023	3/4" (M)	1/2" (F)	16	50
3.28.026	1/2" (M)	3/4" (F)	16	50
3.28.026.2	3/4" (M)	3/4" (F)	16	50
3.28.028	1" (M)	3/4" (F)	16	50
3.28.033	3/4" (M)	1" (F)	16	50
3.28.035	1" (M)	1" (F)	16	75
3.28.037	1 1/4" (M)	1" (F)	16	75
3.28.041	1" (M)	1 1/4" (F)	16	50
3.28.043	1 1/4" (M)	1 1/4" (F)	16	50
3.28.045	1 1/2" (M)	1 1/4" (F)	16	100
3.28.051	1 1/4" (M)	1 1/2" (F)	16	75
3.28.053	1 1/2" (M)	1 1/2" (F)	16	75
3.28.064	1 1/2" (M)	2" (M)	16	50
3.28.066	2" (M)	2" (F)	16	40
3.28.076	2" (M)	2 1/2" (F)	10	45
3.28.078	2 1/2" (M)	2 1/2" (F)	10	45



ADAPTOR UNION



ART. CODE	d	PN	PACKING
3.60.010	10	16	200
3.60.012	12	16	200
3.60.016	16	16	100
3.60.020	20	16	100
3.60.025	25	16	60
3.60.032	32	16	150
3.60.040	40	16	100
3.60.050	50	16	60
3.60.063	63	16	45
3.60.075	75	10	25
3.60.090	90	10	15
3.60.110	110	10	6

ART. CODE	d1	d2	PN	PACKING
3.65.010	10	1/4" (F)	16	100
3.65.012	12	1/4" (F)	16	100
3.65.016	16	3/8" (F)	10	100
3.65.020	20	1/2" (F)	10	100
3.65.025	25	3/4" (F)	10	60
3.65.032	32	1" (F)	10	100
3.65.040	40	1 1/4" (F)	10	80
3.65.050	50	1 1/2" (F)	10	60
3.65.063	63	2" (F)	10	45

ART. CODE	d1	d2	PN	PACKING
3.65.017	16	3/8" (F)	16	100
3.65.021	20	1/2" (F)	16	100
3.65.026	25	3/4" (F)	16	60
3.65.033	32	1" (F)	16	100
3.65.041	40	1 1/4" (F)	16	80
3.65.051	50	1 1/2" (F)	16	60
3.65.064	63	2" (F)	16	45
3.65.075	75	2 1/2" (F)	10	10
3.65.090	90	3" (F)	10	10
3.65.110	110	4" (F)	10	10

All rights reserved by iSinitzan. Reproduction and distribution of any part of this document is prohibited.



ADAPTOR UNION



ART. CODE	d1	d2	PN	PACKING
3.70.010	10	1/4" (M)	16	100
3.70.012	12	1/4" (M)	16	100
3.70.016	16	3/8" (M)	16	100
3.70.020	20	1/2" (M)	16	100
3.70.025	25	3/4" (M)	16	60
3.70.032	32	1" (M)	16	100
3.70.040	40	1 1/4" (M)	16	80
3.70.050	50	1 1/2" (M)	16	60
3.70.063	63	2" (M)	16	45
3.70.075	75	2 1/2" (M)	10	25
3.70.090	90	3" (M)	10	15
3.70.110	110	4" (M)	10	8

RUBBER WASHER FOR COUPLING



ART. CODE	d1	d2	PN	THICK	PACKING
8.05.020	1"	18,5	30	2	1000
8.05.025	1 1/4"	29	39	3	500
8.05.030	1 1/2"	34	45	3	300
8.05.035	2"	44	57	3	250
8.05.040	1/2"	57	73	4	100
8.05.045	3"	67	85	4	50



2/3 UNION



ART. CODE	d1	d2	PN	PACKING
5.14.020	32	1 1/4" (F)	16	100
5.14.030	40	1 1/2" (F)	16	100
5.14.040	50	2" (F)	16	50
5.14.045	63	2 1/2" (F)	10	50
5.14.050	75	3" (F)	6	25



ART. CODE	d1	d2	PN	PACKING
5.15.010	25	1" (F)	16	250
5.15.015	32	1" (F)	10	200
5.15.020	32	1 1/4" (F)	16	250
5.15.025	40	1 1/4" (F)	10	100
5.15.030	40	1 1/2" (F)	16	200
5.15.035	50	1 1/2" (F)	10	100
5.15.040	50	2" (F)	16	100
5.15.043	63	2" (F)	10	25
5.15.045	63	2 1/2" (F)	10	50
5.15.048	75	2 1/2" (F)	6	25
5.15.050	75	3" (F)	6	25
5.15.055	90	3" (F)	6	25



CAP



TYPE A



TYPE B

ART. CODE	D	PN	PACKING
3.55.010	10	16	250
3.55.012	12	16	250
3.55.016	16	16	250
3.55.020	20	16	250
3.55.025	25	16	250
3.55.032	32	16	175
3.55.040	40	16	100
3.55.050	50	16	200
3.55.063	63	16	115
3.55.075	75	16	70
3.55.090	90	16	45
3.55.110	110	16	24
3.55.125	125	16	15
3.55.140	140	16	15
3.55.160	160	16	8
3.55.200	200	10	3
3.55.225	225	10	2
3.55.250	250	10	2
3.55.280	280	10	1
3.55.315	315	10	1

ART. CODE	D	TYPE	PN	PACKING
3.40.010	3/8" (F)	A	10	250(5x50)
3.40.020	1/2" (F)	A	10	500
3.40.030	3/4" (F)	A	10	400(8x50)
3.40.040	1" (F)	A	10	500(10x50)
3.40.050	1 1/4" (F)	A	10	500(10x50)
3.40.062	1 1/2" (F)	A	10	300
3.40.072	2" (F)	A	10	150
3.40.075	2 1/4" (F)	A	10	25
3.40.082	2 1/2" (F)	A	10	100
3.40.085	2 3/4" (F)	A	10	25
3.40.092	3" (F)	A	10	50
3.40.102	4" (F)	A	6	10
3.40.060	1 1/2" (F)	B	10	300
3.40.070	2" (F)	B	10	150
3.40.080	2 1/2" (F)	B	10	100
3.40.090	3" (F)	B	10	50
3.40.100	4" (F)	B	6	10

RUBBER WASHER FOR COUPLING



ART. CODE	d1	d2	PN	THICK	PACKING
8.05.020	1"	18,5	30	2	1000
8.05.025	1 1/4"	29	39	3	500
8.05.030	1 1/2"	34	45	3	300
8.05.035	2"	44	57	3	250
8.05.040	1/2"	57	73	4	100
8.05.045	3"	67	85	4	50

All rights reserved by iSiiNitzan. Reproduction and distribution of any part of this document is prohibited.



REDUCING SOCKET

d1 - d2



d3

ART. CODE	d1	d2	d3	PN	PACKING
3.92.010	10	6	8	16	250
3.92.012	12	8	10	16	250
3.92.016	16	12	8	16	250
3.92.017	16	12	10	16	250
3.92.020	20	16	10	16	250
3.92.021	20	16	12	16	250
3.92.025	25	20	12	16	125
3.92.026	25	20	16	16	125
3.92.032	32	25	16	16	125
3.92.033	32	25	20	16	125
3.92.040	40	32	16	16	125
3.92.041	40	32	20	16	125
3.92.042	40	32	25	16	125
3.92.050	50	40	20	16	75
3.92.051	50	40	25	16	75
3.92.052	50	40	32	16	75
3.92.053	50	40	40	16	75
3.92.063	63	50	25	16	75
3.92.064	63	50	32	16	75
3.92.065	63	50	40	16	75
3.92.066	63	50	50	16	75
3.92.075	75	63	32	16	75
3.92.076	75	63	40	16	75
3.92.077	75	63	50	16	75
3.92.090	90	75	40	16	60

ART. CODE	d1	d2	d3	PN	PACKING
3.92.091	90	75	50	16	75
3.92.092	90	75	63	16	50
3.92.110	110	90	50	16	30
3.92.111	110	90	63	16	30
3.92.112	110	90	75	16	36
3.92.124	125	110	50	16	24
3.92.125	125	110	63	16	24
3.92.126	125	110	75	16	24
3.92.127	125	110	90	16	24
3.92.140	140	125	75	16	24
3.92.141	140	125	90	16	24
3.92.142	140	125	110	16	14
3.92.160	160	140	90	16	8
3.92.161	160	140	110	16	8
3.92.162	160	140	125	16	10
3.93.160	-	160	90	16	8
3.93.161	-	160	110	16	8
3.93.162	-	160	125	16	8
3.93.201	-	200	125	10	2
3.93.203	-	200	160	10	2
3.93.226	-	225	160	10	1
3.93.227	-	225	200	10	1
3.93.253	-	250	200	10	1
3.93.318	-	315	250	10	1

All rights reserved by iSinitzan. Reproduction and distribution of any part of this document is prohibited.

iSii-Nitzan GmbH

Via Cremignone 4C, Sorengo,
Switzerland, CH 6924

+(41) 765851837

info@isii-nitzan.swiss

www.isii-nitzan.swiss

More Information:



Versión: J2024-1

SOCKET



ART. CODE	D	PN	PACKING
3.90.010	10	16	300(6 x50)
3.90.012*	12	16	300(6 x50)
3.90.016*	16	16	300(6 x50)
3.90.020*	20	16	300(6 x50)
3.90.025*	25	16	200
3.90.032*	32	16	300
3.90.040*	40	16	200
3.90.050*	50	16	200
3.90.063*	63	16	100
3.90.075	75	16	65
3.90.090	90	16	36
3.90.110	110	16	15
3.90.125	125	16	12
3.90.140	140	16	10
3.90.160	160	16	6
3.90.200	200	10	3
3.90.225	225	10	1
3.90.250	250	10	1
3.90.280	280	10	1
3.90.315	315	10	1



TANK CONNECTOR



ART. CODE	d1	d3	PACKING
5.17.016	16	3/4"	50
5.17.020	20	1"	50
5.17.025	25	1 1/4"	75
5.17.032	32	1 1/2"	50
5.17.040	40	2"	45
5.17.050	50	2 1/4"	45
5.17.063	63	2 3/4"	20



ART. CODE	d1	d3	PACKING
5.18.016	16	3/4"	50
5.18.020	20	1"	50
5.18.025	25	1 1/4"	75
5.18.032	32	1 1/2"	50
5.18.040	40	2"	40
5.18.050	50	2 1/4"	40
5.18.063	63	2 3/4"	25



ART. CODE	d1	d3	PACKING
5.16.022	20	3/4" (M)	100
5.16.027	25	1" (M)	100
5.16.032	32	1 1/4" (M)	100
5.16.040	40	1 3/4" (M)	80
5.16.054	50	2" (M)	45
5.16.064	63	2 1/2" (M)	30

Gaskets -EPDM

All rights reserved by iSinitzan. Reproduction and distribution of any part of this document is prohibited.



GROVED TRANSITION SOCKET VICTAULIC®



ART. CODE	d1	d2	VICTAULIC®	mm	PACKING
3.95.040*	32	40	1 1/4"	42,4	50
3.95.050	40	50	1 1/2"	48,3	50
3.95.063	50	63	2"	60,3	50
3.95.075	63	75	2 1/2"	73	50
3.95.090*	75	90	3"	88,9	30
3.95.125*	110	125	4"	114,3	27

FUNNEL



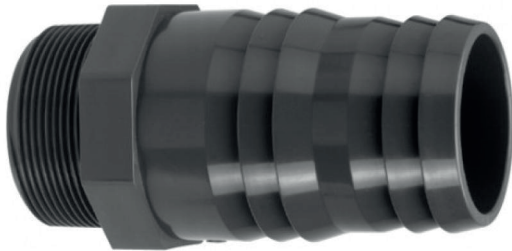
ART. CODE	d1	d2	PACKING
5.35.010	149	3/4"	40
5.35.015	149	1"	40
5.35.020	149	1 1/4"	40



HOSE NOZZLE



TYPE 1



TYPE 2



TYPE 3

ART. CODE	d1	d2	PACKING
3.57.010	10	10	100
3.57.012	12	14	100
3.57.016	16	18	100
3.57.020	20	22	100
3.57.025	25	28	100
3.57.032	32	34	100
3.57.040	40	43	100
3.57.050	50	53	100
3.57.063	63	66	50

ART. CODE	d1	d2	PACKING
3.57.013	1/4" (M)	14	100
3.57.017	3/8" (M)	18	100
3.57.021	1/2" (M)	22	100
3.57.026	3/4" (M)	28	100
3.57.033	1" (M)	34	100
3.57.041	1 1/4" (M)	43	100
3.57.051	1 1/2" (M)	53	100
3.57.064	2" (M)	66	50

ART. CODE	d1	d2	PACKING
3.57.018	3/4" (F)	18	50
3.57.022	1" (F)	22	50
3.57.027	1 1/4" (F)	28	50
3.57.034	1 1/2" (F)	34	50
3.57.042	2" (F)	43	50
3.57.052	2 1/4" (F)	53	50
3.57.065	2 3/4" (F)	66	25

Gaskets -EPDM

All rights reserved by iSinitzan. Reproduction and distribution of any part of this document is prohibited.



BACKING FLANGE / FLANGE ADAPTOR



ART. CODE	d1	DN	PACKING
3.72.017	16	10	100
3.72.021	20	15	100
3.72.026	25	20	100
3.72.033	32	25	100
3.72.041	40	32	100
3.72.051	50	40	150
3.72.064	63	50	75
3.72.076	75	65	50
3.72.091	90	80	40
3.72.111	110	100	25
3.72.126	125	110	10
3.72.141	140	125	10
3.72.161	160	150	10
3.72.201	200	175	3
3.72.203*	200	200	3
3.72.226	225	200	3
3.72.251	250	225	4
3.72.281	280	250	2
3.72.316	315	300	2
3.72.356	355	350	1
3.72.401	400	400	1

ART. CODE	DIA	DN	HOLES	PACKING
3.72.016	16	10	4	50
3.72.020	20	15	4	50
3.72.025	25	20	4	50
3.72.032	32	25	4	50
3.72.040	40	32	4	30
3.72.050	50	40	4	75
3.72.063	63	50	4	50
3.72.075	75	65	4	30
3.72.090	90	80	4	25
3.72.110	110	100	8	15
3.72.125	125	110	8	15
3.72.140	140	125	8	15
3.72.160	160	150	8	10
3.72.199	200	200	8	5
3.72.200	200	175	8	5
3.72.225	225	200	8	5
3.72.250	250	225	8	5
3.72.280	280	250	12	1
3.72.315	315	300	12	1
3.72.355	355	350	16	1
3.72.400	400	400	16	1

All rights reserved by iSinitzan. Reproduction and distribution of any part of this document is prohibited.



FIXED FLANGE



ART. CODE	d1	O-RING	HOLES	PACKING
3.73.201	200	215,3 x 7	8	3
3.73.226	225	240,7 x 7	8	3
3.73.251	250	266,0 x 7	8	2
3.73.281	280	295,0 x 10	12	2
3.73.316	315	340,0 x 10	12	1

RUBBER WASHER FLANGE ADAPTOR



ART. CODE	DIA	PACKING
8.04.016	16	1000
8.04.020	20	1000
8.04.025	25	500
8.04.032	32	500
8.04.040	40	250
8.04.050	50	150
8.04.063	63	75
8.04.075	75	50
8.04.090	90	40
8.04.110	110	25
8.04.125	125	10
8.04.140	140	10
8.04.160	160	10
8.04.200	200	10
8.04.225	225	10
8.04.250	250	10
8.04.280	280	10
8.04.315	315	10
8.04.355	355	10
8.04.400	400	10



BOLT, NUTS, WASHER



GALVANIZED			STAINLESS STEEL
4050409	Six-side bolt	M 16 x 50	4033880
4050420	Six-side bolt	M 16 x 60	4033890
4050440	Six-side bolt	M 16 x 70	4033910
4050460	Six-side bolt	M 16 x 80	4033930
4050470	Six-side bolt	M 16 x 90	4033940
4050480	Six-side bolt	M 16 x 100	4033950
4050490	Six-side bolt	M 16 x 110	4033960
4050500	Six-side bolt	M 16 x 120	4033970
4050510	Six-side bolt	M 16 x 130	4033980
4050520	Six-side bolt	M 16 x 140	4033985
4050530	Six-side bolt	M 16 x 150	
4050540	Six-side bolt	M 16 x 160	
4050545	Six-side bolt	M 16 x 170	4033975
4050550	Six-side bolt	M 16 x 180	4033987
4050551	Six-side bolt	M 16 x 190	
4050560	Six-side bolt	M 16 x 200	4033989
4050562	Six-side bolt	M 16 x 220	
4002457	Six-side bolt	M 16 x 230	
4050565	Six-side bolt	M 16 x 240	
4050567	Six-side bolt	M 16 x 260	
4011530	Six-side bolt	M 16 x 280	
4050555	Six-side bolt	M 16 x 300	



GALVANIZED			STAINLESS STEEL
4050724	Six-side bolt	M 20 x 180	4068958
4050740	Six-side bolt	M 20 x 200	4068960
4050735	Six-side bolt	M 20 x 220	
4050745	Six-side bolt	M 20 x 240	
4050748	Six-side bolt	M 20 x 300	



GALVANIZED			STAINLESS STEEL
4050990	Six-side bolt	M 16	4038410
40501010	Six-side bolt	M 20	4038420



GALVANIZED			STAINLESS STEEL
4044340	Washer	M 16	4038510
4044360	Washer	M 20	4038530

All rights reserved by iSiiNitzan. Reproduction and distribution of any part of this document is prohibited.



PP CLAMP SADDLE



ART. CODE	d1	d2	PACKING
6.50.020	20	1/2" (F)	100
6.50.025	25	1/2" (F)	100
6.50.032	32	1/2" (F)	100
6.50.033	32	3/4" (F)	100
6.50.034	32	1" (F)	100
6.50.040	40	1/2" (F)	80
6.50.041	40	3/4" (F)	80
6.50.042	40	1" (F)	80
6.50.050	50	1/2" (F)	60
6.50.051	50	3/4" (F)	60
6.50.052	50	1" (F)	60
6.50.053	50	1 1/4" (F)	60
6.50.063	63	1/2" (F)	40
6.50.064	63	3/4" (F)	40
6.50.065	63	1" (F)	40
6.50.066	63	1 1/4" (F)	30
6.50.067	63	1 1/2" (F)	30
6.50.075	75	1/2" (F)	25
6.50.076	75	3/4" (F)	25
6.50.077	75	1" (F)	25
6.50.078	75	1 1/4" (F)	25
6.50.079	75	1 1/2" (F)	25
6.50.080	75	2" (F)	25
6.50.090	90	1/2" (F)	25

ART. CODE	d1	d2	PACKING
6.50.091	90	3/4" (F)	25
6.50.092	90	1" (F)	25
6.50.093	90	1 1/4" (F)	25
6.50.094	90	1 1/2" (F)	25
6.50.095	90	2" (F)	25
6.50.110	110	1" (F)	20
6.50.111	110	1 1/4" (F)	20
6.50.112	110	1 1/2" (F)	20
6.50.113	110	2" (F)	20
6.50.114	110	2 1/2" (F)	15
6.50.125	125	1" (F)	15
6.50.126	125	1 1/4" (F)	15
6.50.127	125	1 1/2" (F)	15
6.50.128	125	2" (F)	15
6.50.129	125	2 1/2" (F)	10
6.50.140	140	1 1/4" (F)	10
6.50.141	140	2" (F)	10
6.50.142	140	2 1/2" (F)	10
6.50.160	160	1" (F)	10
6.50.161	160	1 1/4" (F)	10
6.50.162	160	1 1/2" (F)	10
6.50.163	160	2" (F)	10
6.50.164	160	2 1/2" (F)	10
6.50.165	160	3" (F)	10

All rights reserved by iSinitzan. Reproduction and distribution of any part of this document is prohibited.

iSii-Nitzan GmbH
 Via Cremignone 4C, Sorengo,
 Switzerland, CH 6924
 +(41) 765851837
 info@isii-nitzan.swiss
 www.isii-nitzan.swiss

More Information:



Versión: J2024-1

PP CLAMP SADDLE



ART. CODE	d1	d2	PACKING
6.55.020	20	1/2" (M)	100
6.55.032	32	1/2" (M)	100
6.55.034	32	1" (M)	100
6.55.041	40	3/4" (M)	80
6.55.042	40	1" (M)	80
6.55.050	50	1/2" (M)	60
6.55.053	50	1 1/4" (M)	60
6.55.063	63	1/2" (M)	40
6.55.064	63	3/4" (M)	40
6.55.065	63	1" (M)	40
6.55.066	63	1 1/4" (M)	30
6.55.075	75	1/2" (M)	25
6.55.076	75	3/4" (M)	25
6.55.077	75	1" (M)	25
6.55.078	75	1 1/4" (M)	25
6.55.079	75	1 1/2" (M)	25
6.55.080	75	2" (M)	25
6.55.090	90	1/2" (M)	25
6.55.091	90	3/4" (M)	25
6.55.092	90	1" (M)	25

ART. CODE	d1	d2	PACKING
6.55.093	90	1 1/4" (M)	25
6.55.095	90	2" (M)	25
6.55.110	110	1" (M)	20
6.55.111	110	1 1/4" (M)	20
6.55.112	110	1 1/2" (M)	20
6.55.113	110	2" (M)	20
6.55.114	110	2 1/2" (M)	20
6.55.125	125	1" (M)	15
6.55.126	125	1 1/4" (M)	15
6.55.127	125	1 1/2" (M)	15
6.55.128	125	2" (M)	15
6.55.129	125	2 1/2" (M)	15
6.55.140	140	1 1/4" (M)	10
6.55.141	140	2" (M)	10
6.55.142	140	2 1/2" (M)	10
6.55.160	160	1" (M)	10
6.55.161	160	1 1/4" (M)	10
6.55.162	160	1 1/2" (M)	10
6.55.163	160	2" (M)	10
6.55.165	160	3" (M)	10



SLIDE COUPLING



ART. CODE		D1	bar
904245	Slide coupling (U2)	50	10
904250	Slide coupling (U2)	63	10
904255	Slide coupling (U2)	75	10
904260	Slide coupling (U2)	90	10
904290	Slide coupling (U2)	110	10
904292	Slide coupling (U2)	125	10
904294	Slide coupling (U2)	160	10
904296	Slide coupling (U2)	200	10
904297	Slide coupling (U2)	250	10
904298	Slide coupling (U2)	315	10



MISTING NOZZLE



ART. CODE	MODEL	d1	d2	25 mwk	50 mwk	100 mwk		PACKING
4.32.114	Bluewhite	M 11	1	0,65	1,28	1,82	ltr/min	1000
4.32.115	Redwhite	M 11	1,25	0,9	1,82	2,44	ltr/min	1000
4.32.117	Blackwhite	M 11	1,5	1,3	2,92	3,7	ltr/min	1000
4.32.384	Bluewhite	WW 3/8"	1	0,65	1,28	1,82	ltr/min	1000
4.32.385	Redwhite	WW 3/8"	1,25	0,9	1,82	2,44	ltr/min	1000
4.32.387	Blackwhite	WW 3/8"	1,5	1,3	2,92	3,7	ltr/min	1000

HIGH PRESSURE MISTING NOZZLE



ART. CODE	MODEL	d1	d2	50 mwk	100 mwk	200 mwk		PACKING
4.32.113	Greywhite	M 11	0,75	0,46	0,72	0,94	ltr/min	1000
4.32.383	Greywhite	WW 3/8"	0,75	0,46	0,72	0,94	ltr/min	1000

NOZZLE NON RETURN VALVE



ART. CODE	d1	d2	B	PARTS	DESCRIPTION	PACKING
4.50.050	WW 3/8"	WW 3/8"	57			1000
4.50.051	M 11	WW 3/8"	57			1000
4.50.052	M 11	M 11	57			1000
4.50.020				B	O - Ring 9,50 x 2,00	1000
4.50.065				A	Stainlessspring	1000
4.50.070				C	Rubberball Ø 8.00	1000



BUTTERFLY VALVE



ART. CODE	d	DN	PACKING
6.78.063	63	65	2
6.78.075	75	65	2
6.78.090	90	80	2
6.78.110	110	100	1
6.78.125	125	125	1
6.78.140	140	125	1
6.78.160	160	150	1
6.78.200	200	200	1
6.78.225	225	200	1



ART. CODE	d	DN	PACKING
6.78.064	63	65	2
6.78.076	75	65	2
6.78.091	90	80	2
6.78.111	110	80	1
6.78.126	125	125	1
6.78.141	140	125	1
6.78.161	160	150	1
6.78.201	200	200	1
6.78.226	225	200	1

**Gaskets
-EPDM**

All rights reserved by iSinitzan. Reproduction and distribution of any part of this document is prohibited.

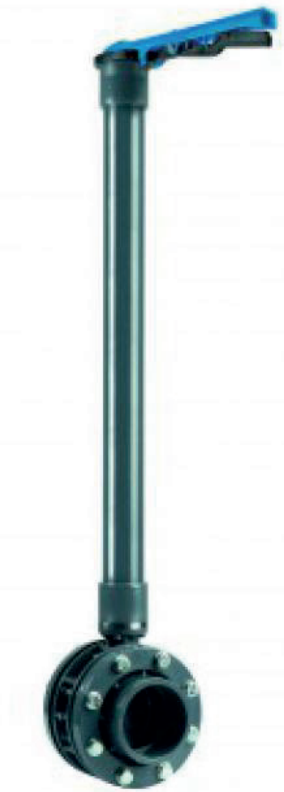
iSii-Nitzan GmbH
Via Cremignone 4C, Sorengo,
Switzerland, CH 6924
+(41) 765851837
info@isii-nitzan.swiss
www.isii-nitzan.swiss

More Information:



Versión: J2024-1

EXTENDED BUTTERFLY VALVE



ART. CODE	d	L
6.79.063.2	63	1000
6.79.063.3	63	1500
6.79.075.2	75	1000
6.79.075.3	75	1500
6.79.090.2	90	1000
6.79.090.3	90	1500
6.79.110.2	110	1000
6.79.110.3	110	1500
6.79.125.2	125	1000
6.79.125.3	125	1500
6.79.140.2	140	1000
6.79.140.3	140	1500
6.79.160.2	160	1000
6.79.160.3	160	1500
6.79.200.2	200	1000
6.79.200.3	200	1500
6.79.225.2	225	1000
6.79.225.3	225	1500

ART. CODE	d	L
6.79.064.2	63	1000
6.79.064.3	63	1500
6.79.076.2	75	1000
6.79.076.3	75	1500
6.79.091.2	90	1000
6.79.091.3	90	1500
6.79.111.2	110	1000
6.79.111.3	110	1500
6.79.126.2	125	1000
6.79.126.3	125	1500
6.79.141.2	140	1000
6.79.141.3	140	1500
6.79.161.2	160	1000
6.79.161.3	160	1500
6.79.201.2	200	1000
6.79.201.3	200	1500
6.79.226.2	225	1000
6.79.226.3	225	1500

**Gaskets
-EPDM**

All rights reserved by iSiiNitzan. Reproduction and distribution of any part of this document is prohibited.



CHECKVALVE



**Gaskets
-EPDM**

ART. CODE	d1	DN	PN	P	KV	PACKING
6.60.016	16	10	16	5	61	50
6.60.020	20	15	16	5	147	50
6.60.025	25	20	16	5	263	50
6.60.032	32	25	16	5	388	50
6.60.040	40	32	16	5	682	30
6.60.050	50	40	16	5	1052	10
6.60.063	63	50	16	5	1658	10
6.60.075	75	65	10	1	1933	5
6.60.090	90	80	10	1	3166	3
6.60.110	110	100	10	1	4650	1



**Gaskets
-VITON®**

ART. CODE	d1	DN	PN	P	KV	PACKING
6.60.075	75	65	10	10	1933	1
6.61.016	16	10	16	5	61	50
6.61.020	20	15	16	5	147	50
6.61.025	25	20	16	5	263	50
6.61.032	32	25	16	5	388	50
6.61.040	40	32	16	5	682	30
6.61.050	50	40	16	5	1052	10
6.61.063	63	50	16	5	1658	10
6.61.090	90	80	10	1	3166	1
6.61.110	110	100	10	1	4650	1



BALL VALVE



**Gaskets
-EPDM**



**Gaskets
-EPDM**



**Gaskets
-VITON®**

ART. CODE	d1	DN	PN	PACKING
6.15.016	16	10	16	50
6.15.020	20	15	16	50
6.15.025	25	20	16	50
6.15.032	32	25	16	50
6.15.040	40	32	16	25
6.15.050	50	40	16	15
6.15.063	63	50	16	10
6.15.075	75	65	10	5
6.15.090	90	80	10	3
6.15.110	110	100	10	1

ART. CODE	d1	DN	PN	PACKING
6.15.017	16	10	16	50
6.15.021	20	15	16	50
6.15.026	25	20	16	50
6.15.033	32	25	16	50
6.15.041	40	32	16	25
6.15.051	50	40	16	15
6.15.064	63	50	16	10
6.15.076	75	65	10	5
6.15.091	90	80	10	3
6.15.111	110	100	10	1

ART. CODE	d1	DN	PN	PACKING
6.16.016	16	10	16	50
6.16.020	20	15	16	50
6.16.025	25	20	16	50
6.16.032	32	25	16	50
6.16.040	40	32	16	25
6.16.050	50	40	16	15
6.16.063	63	50	16	10
6.16.075	75	65	10	5
6.16.090	90	80	10	3
6.16.110	110	100	10	1



BALL VALVE PE



ART. CODE	d1	d2	d3-PE	DN	PN	PACKING
6.00.016	25	32	20	20	10	50
6.00.020	25	32	20	20	10	50
6.00.025	25	32	20	20	10	50
6.00.032	32	40	25	25	10	25



PE COUPLING



ART. CODE	d1	PN	PACKING
7.30.016*	16	16	175
7.30.020*	20	16	175
7.30.025*	25	16	175
7.30.032*	32	16	100
7.30.040*	40	16	50
7.30.050	50	16	20
7.30.063	63	16	11
7.30.075	75	16	8
7.30.090	90	10	2
7.30.110	110	10	2



ART. CODE	d1	DN	PN	PACKING
7.36.020*	20	16	16	100
7.36.024*	25	16	16	100
7.36.025*	25	20	16	100
7.36.032*	32	25	16	50
7.36.040*	40	32	16	50
7.36.048	50	25	16	16
7.36.049	50	32	16	16
7.36.050	50	40	16	16
7.36.061	63	32	16	8
7.36.062	63	40	16	8
7.36.063	63	50	16	8
7.36.072	75	32	10	6
7.36.073	75	40	16	6
7.36.074	75	50	10	6
7.36.075	75	63	10	6



PE ELBOW



ART. CODE	d1	PN	PACKING
7.20.016*	16	16	100
7.20.020*	20	16	100
7.20.025*	25	16	100
7.20.032*	32	16	50
7.20.040*	40	16	50
7.20.050	50	16	12
7.20.063	63	16	8
7.20.075	75	10	6



ART. CODE	d1	d2	PN	PACKING
7.22.016*	16	3/8" (M)	16	150
7.22.017*	16	1/2" (M)	16	150
7.22.020*	20	1/2" (M)	16	150
7.22.021*	20	3/4" (M)	16	150
7.22.024*	25	1/2" (M)	16	100
7.22.025*	25	3/4" (M)	16	100
7.22.026*	25	1" (M)	16	100
7.22.032*	32	1" (M)	16	50
7.22.033*	32	1 1/4" (M)	16	50
7.22.040*	40	1 1/4" (M)	16	50
7.22.041*	40	1 1/2" (M)	16	50
7.22.050	50	1 1/2" (M)	16	18
7.22.051	50	2" (M)	16	18
7.22.063	63	2" (M)	16	10
7.22.074	75	2" (M)	10	6
7.22.075	75	2 1/2" (M)	10	6
7.22.076	75	3" (M)	10	6

All rights reserved by iSinitzan. Reproduction and distribution of any part of this document is prohibited.



PE ELBOW



ART. CODE	d1	d2	PN	PACKING
7.24.016	16	3/8" (F)	10	150
7.24.017	16	1/2" (F)	10	150
7.24.020	20	1/2" (F)	10	150
7.24.021	20	3/4" (F)	10	150
7.24.024	25	1/2" (F)	10	100
7.24.025	25	3/4" (F)	10	100
7.24.026	25	1" (F)	10	100
7.24.032	32	1" (F)	10	50
7.24.033	32	1 1/4" (F)	10	50
7.24.040	40	1 1/4" (F)	10	50
7.24.041	40	1 1/2" (F)	10	50



ART. CODE	d1	d2	PN	PACKING
7.21.015	16	25	10	200
7.21.016	16	32	10	200
7.21.019	20	25	10	200
7.21.020	20	32	10	200
7.21.024	25	25	10	150
7.21.025	25	32	10	200



PE TEE



ART. CODE	d1	PN	PACKING
7.10.016*	16	16	100
7.10.020*	20	16	100
7.10.025*	25	16	50
7.10.032*	32	16	50
7.10.040*	40	16	50
7.10.050	50	16	8
7.10.063	63	16	7
7.10.075	75	10	4

ART. CODE	d1	d2	PN	PACKING
7.16.020*	20	16	16	50
7.16.024*	25	16	16	50
7.16.025*	25	20	16	50
7.16.032*	32	25	16	50
7.16.040*	40	32	16	25
7.16.050	50	40	16	8
7.16.063	63	50	16	5
7.16.075	75	63	10	4

ART. CODE	d1	d2	PN	PACKING
7.12.016*	16	3/8" (M)	16	100
7.12.017*	16	1/2" (M)	16	100
7.12.020*	20	1/2" (M)	16	100
7.12.021*	20	3/4" (M)	16	100
7.12.024*	25	1/2" (M)	16	75
7.12.025*	25	3/4" (M)	16	75
7.12.026*	25	1" (M)	16	75
7.12.032*	32	1" (M)	16	50
7.12.033*	32	1 1/4" (M)	16	50
7.12.040*	40	1 1/4" (M)	16	40
7.12.041*	40	1 1/2" (M)	16	40
7.12.051	50	2" (M)	16	10
7.12.062	63	1 1/2" (M)	16	6
7.12.063	63	2" (M)	16	6
7.12.074	75	2" (M)	10	4
7.12.075	75	2 1/2" (M)	10	4
7.12.076	75	3" (M)	10	4

All rights reserved by iSinitzan. Reproduction and distribution of any part of this document is prohibited.



PE TEE



ART. CODE	d1	d2	PN	PACKING
7.14.016	16	3/8" (F)	10	100
7.14.017	16	1/2" (F)	10	100
7.14.020	20	1/2" (F)	10	100
7.14.021	20	3/4" (F)	10	100
7.14.024	25	1/2" (F)	10	75
7.14.025	25	3/4" (F)	10	75
7.14.026	25	1" (F)	10	75
7.14.032	32	1" (F)	10	50
7.14.033	32	1 1/4" (F)	10	50
7.14.040	40	1 1/4" (F)	10	40



PE COUPLING



ART. CODE	d1	d2	PN	PACKING
7.32.016*	16	3/8" (M)	16	200
7.32.017*	16	1/2" (M)	16	200
7.32.020*	20	1/2" (M)	16	200
7.32.021*	20	3/4" (M)	16	200
7.32.025*	25	1/2" (M)	16	200
7.32.026*	25	3/4" (M)	16	200
7.32.027*	25	1" (M)	16	200
7.32.031*	32	1/2" (M)	16	200
7.32.032*	32	3/4" (M)	16	200
7.32.033*	32	1" (M)	16	175
7.32.034*	32	1 1/4" (M)	16	175
7.32.040*	40	1" (M)	16	100
7.32.041*	40	1 1/4" (M)	16	100
7.32.042*	40	1 1/2" (M)	16	100
7.32.050	50	1 1/2" (M)	10	24
7.32.051	50	2" (M)	16	24
7.32.062	63	1 1/2" (M)	16	18
7.32.063	63	2" (M)	16	18
7.32.074	75	2" (M)	10	12
7.32.075	75	2 1/2" (M)	10	12
7.32.076	75	3" (M)	10	13
7.32.090	90	2" (M)	10	5
7.32.091	90	3" (M)	10	5
7.32.109	110	3" (M)	10	2
7.32.110	110	4" (M)	10	2

All rights reserved by iSinitzan. Reproduction and distribution of any part of this document is prohibited.



PE COUPLING



ART. CODE	d1	d2	PN	PACKING
7.34.016	16	3/8" (F)	10	200
7.34.017	16	1/2" (F)	10	200
7.34.020	20	3/8" (F)	10	200
7.34.021	20	1/2" (F)	10	200
7.34.022	20	3/4" (F)	10	200
7.34.025	25	1/2" (F)	10	200
7.34.026	25	3/4" (F)	10	200
7.34.027	25	1" (F)	10	175
7.34.031	32	1/2" (F)	10	175
7.34.032	32	3/4" (F)	10	175
7.34.033	32	1" (F)	10	175
7.34.034	32	1 1/4" (F)	10	100
7.34.040	40	1" (F)	10	75
7.34.041	40	1 1/4" (F)	10	75
7.34.042	40	1 1/2" (F)	10	100



PE COUPLING



ART. CODE	d1	d2	d3	PN	PACKING
7.31.016	16	25	32	10	200
7.31.020	20	25	32	10	200
7.31.025	25	25	32	10	200
7.31.032	32	32	40	10	150
7.31.040	40	40	50	10	50

PE TEE



ART. CODE	d1	d2	PN	PACKING
7.11.016	16	32	10	125
7.11.020	20	32	10	150
7.11.025	25	32	10	120



ART. CODE	d1	d2	PN	PACKING
7.11.049	50	16	10	100
7.11.050	50	20	10	100
7.11.055	50	25	10	50
7.11.059	63	16	10	50
7.11.060	63	20	10	50
7.11.065	63	25	10	50
7.11.066	63	32	10	50
7.11.069	75	16	10	30
7.11.070	75	20	10	30
7.11.075	75	25	10	30
7.11.076	75	32	10	25
7.11.079	90	16	10	17
7.11.080	90	20	10	17
7.11.085	90	25	10	17
7.11.086	90	32	10	17

All rights reserved by iSinitzan. Reproduction and distribution of any part of this document is prohibited.



PE END PART



ART. CODE	d1	d2	PN	PACKING
7.33.016	16	1/2"	10	250
7.33.020	20	3/4"	10	250
7.33.025	25	3/4"	10	175
7.33.032	32	1"	10	125
7.33.040	40	1 1/4"	10	100
7.33.050	50	1 1/2"	10	24
7.33.063	63	2"	10	18
7.33.075	75	2 1/2"	10	13
7.33.090	90	3"	10	5
7.33.110	110	4"	6	2

PE FITTING CAP



ART. CODE	d	B	PN	PACKING
7.38.016	16	33	10	250
7.38.020	20	41	10	250
7.38.025	25	41	10	250
7.38.032	32	47	10	125
7.38.040	40	51	10	75

