

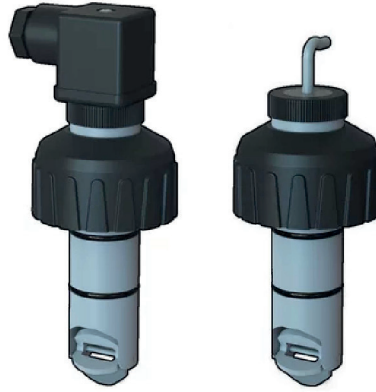
FLOWMETER F3.00.C.XX



ART. CODE	DESCRIPTION	SENSOR	FLOW RATE RANGE	SEALS
F3.00.C.01	Flow Sensor	L0	0,15 to 8 m/s ²	C-PVC / EPDM
F3.00.C.02	Flow Sensor	L0	0,15 to 8 m/s ²	C-PVC / FKM
F3.00.C.03	Flow Sensor	L1	0,15 to 8 m/s ²	C-PVC / EPDM
F3.00.C.04	Flow Sensor	L1	0,15 to 8 m/s ²	C-PVC / FKM
F3.00.C.05	Flow Sensor	L0	0,15 to 8 m/s ²	PVDF / EPDM
F3.00.C.06	Flow Sensor	L0	0,15 to 8 m/s ²	PVDF / FKM
F3.00.C.07	Flow Sensor	L1	0,15 to 8 m/s ²	PVDF / EPDM
F3.00.C.08	Flow Sensor	L1	0,15 to 8 m/s ²	PVDF / FKM
F3.00.C.09	Flow Sensor	L0	0,15 to 8 m/s ²	316L SS / EPDM
F3.00.C.10	Flow Sensor	L0	0,15 to 8 m/s ²	316L SS / FKM
F3.00.C.11	Flow Sensor	L1	0,15 to 8 m/s ²	316L SS / EPDM
F3.00.C.12	Flow Sensor	L1	0,15 to 8 m/s ²	316L SS / FKM
F3.00.C.13	Flow Sensor	L0	0,15 to 8 m/s ²	C-PVC / EPDM
F3.00.C.14	Flow Sensor	L0	0,15 to 8 m/s ²	C-PVC / FKM
F3.00.C.15	Flow Sensor	L1	0,15 to 8 m/s ²	C-PVC / EPDM
F3.00.C.16	Flow Sensor	L1	0,15 to 8 m/s ²	C-PVC / FKM
F3.00.C.17	Flow Sensor	L0	0,15 to 8 m/s ²	PVDF / EPDM
F3.00.C.18	Flow Sensor	L0	0,15 to 8 m/s ²	PVDF / FKM
F3.00.C.19	Flow Sensor	L1	0,15 to 8 m/s ²	PVDF / EPDM
F3.00.C.20	Flow Sensor	L1	0,15 to 8 m/s ²	PVDF / FKM
F3.00.C.21	Flow Sensor	L0	0,15 to 8 m/s ²	316L SS / EPDM
F3.00.C.22	Flow Sensor	L0	0,15 to 8 m/s ²	316L SS / FKM
F3.00.C.23	Flow Sensor	L1	0,15 to 8 m/s ²	316L SS / EPDM
F3.00.C.24	Flow Sensor	L1	0,15 to 8 m/s ²	316L SS / FKM



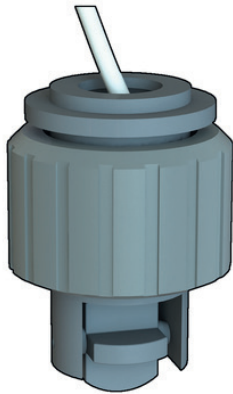
FLOWMETER F3.00.P.XX



ART. CODE	DESCRIPTION	SENSOR	FLOW RATE RANGE	SEALS
F3.00.P.01	Flow Sensor	L0	0,15 to 8 m/s ²	C-PVC / EPDM
F3.00.P.02	Flow Sensor	L0	0,15 to 8 m/s ²	C-PVC / FKM
F3.00.P.03	Flow Sensor	L1	0,15 to 8 m/s ²	C-PVC / EPDM
F3.00.P.04	Flow Sensor	L1	0,15 to 8 m/s ²	C-PVC / FKM
F3.00.P.05	Flow Sensor	L0	0,15 to 8 m/s ²	PVDF / EPDM
F3.00.P.06	Flow Sensor	L0	0,15 to 8 m/s ²	PVDF / FKM
F3.00.P.07	Flow Sensor	L1	0,15 to 8 m/s ²	PVDF / EPDM
F3.00.P.08	Flow Sensor	L1	0,15 to 8 m/s ²	PVDF / FKM
F3.00.P.09	Flow Sensor	L0	0,15 to 8 m/s ²	316L SS / EPDM
F3.00.P.10	Flow Sensor	L0	0,15 to 8 m/s ²	316L SS / FKM
F3.00.P.11	Flow Sensor	L1	0,15 to 8 m/s ²	316L SS / EPDM
F3.00.P.12	Flow Sensor	L1	0,15 to 8 m/s ²	316L SS / FKM
F3.00.P.13	Flow Sensor	L0	0,15 to 8 m/s ²	C-PVC / EPDM
F3.00.P.14	Flow Sensor	L0	0,15 to 8 m/s ²	C-PVC / FKM
F3.00.P.15	Flow Sensor	L1	0,15 to 8 m/s ²	C-PVC / EPDM
F3.00.P.16	Flow Sensor	L1	0,15 to 8 m/s ²	C-PVC / FKM
F3.00.P.17	Flow Sensor	L0	0,15 to 8 m/s ²	PVDF / EPDM
F3.00.P.18	Flow Sensor	L0	0,15 to 8 m/s ²	PVDF / FKM
F3.00.P.19	Flow Sensor	L1	0,15 to 8 m/s ²	PVDF / EPDM
F3.00.P.20	Flow Sensor	L1	0,15 to 8 m/s ²	PVDF / FKM
F3.00.P.21	Flow Sensor	L0	0,15 to 8 m/s ²	316L SS / EPDM
F3.00.P.22	Flow Sensor	L0	0,15 to 8 m/s ²	316L SS / FKM
F3.00.P.23	Flow Sensor	L1	0,15 to 8 m/s ²	316L SS / EPDM
F3.00.P.24	Flow Sensor	L1	0,15 to 8 m/s ²	316L SS / FKM



FLOWMETER F3.10.H.XX



ART. CODE	DESCRIPTION	LENGHT	FLOW RATE RANGE	SEALS
F3.10.H.01	Flow Sensor	41 mm	0,15 to 4 m/s ²	ABS / EPDM
F3.10.H.02	Flow Sensor	41 mm	0,15 to 4 m/s ²	ABS / FKM

FLOWMETER F6.30.XX



ART. CODE	DESCRIPTION	LENGHT	FLOW RATE RANGE	SEALS
F6.30.01	Flow Sensor	L0	0,15 to 8 m/s ²	C-PVC / EPDM
F6.30.02	Flow Sensor	L0	0,15 to 8 m/s ²	C-PVC / FKM
F6.30.03	Flow Sensor	L1	0,15 to 8 m/s ²	C-PVC / EPDM
F6.30.04	Flow Sensor	L1	0,15 to 8 m/s ²	C-PVC / FKM
F6.30.05	Flow Sensor	L0	0,15 to 8 m/s ²	PVDF / EPDM
F6.30.06	Flow Sensor	L0	0,15 to 8 m/s ²	PVDF / FKM
F6.30.07	Flow Sensor	L1	0,15 to 8 m/s ²	PVDF / EPDM
F6.30.08	Flow Sensor	L1	0,15 to 8 m/s ²	PVDF / FKM
F6.30.09	Flow Sensor	L0	0,15 to 8 m/s ²	316L SS / EPDM
F6.30.10	Flow Sensor	L0	0,15 to 8 m/s ²	316L SS / FKM
F6.30.11	Flow Sensor	L1	0,15 to 8 m/s ²	316L SS / EPDM
F6.30.12	Flow Sensor	L1	0,15 to 8 m/s ²	316L SS / FKM



FLOWMETER SM6000



ITEM	FEATURE	CAPACITY
1	NUMBER OF DIGITAL OUTPUTS	2
2	DIGITAL OUTPUT FUNCTION	NO/NC; (parameterisable)
3	NUMBER OF ANALOGUE OUTPUTS	1
4	ANALOGUE CURRENT OUTPUT	4 to 20 [mA]
5	MEASURING RANGE	0,1 to 25 [L/min]
6	PROCESS CONNECTION	Threaded connection G 1/2 DN15 flat seal.
7	DISPLAY MEASURED VALUES	Alphanumeric display, 4-dig

FLOWMETER SM6050



ITEM	FEATURE	CAPACITY
1	NUMBER OF ANALOGUE OUTPUTS	1
2	ANALOGUE CURRENT OUTPUT	4 to 20 [mA]
3	MEASURING RANGE	0,1 to 25 [L/min]
4	PROCESS CONNECTION	Threaded connection G 1/2 DN15 flat seal.

FLOWMETER SV4150



ITEM	FEATURE	CAPACITY
1	NUMBER OF ANALOGUE OUTPUTS	1
2	ANALOGUE CURRENT OUTPUT	4 to 20 [mA]
3	MEASURING RANGE	0,9 to 15 [L/min]
4	PROCESS CONNECTION	Threaded connection G 1/2 DN8.



FLOWMETER SV4100-SV4300



ITEM	FEATURE	CAPACITY	
		SV4100	SV4300
1	NUMBER OF DIGITAL OUTPUTS	2	
2	DIGITAL OUTPUT FUNCTION	NO/NC; (parameterisable)	
3	NUMBER OF ANALOGUE OUTPUTS	1	
4	ANALOGUE CURRENT OUTPUT	4 to 20 [mA]	
5	PROCESS CONNECTION	Diameter Ø 8 mm.	
6	DISPLAY MEASURED VALUES	Alphanumeric display, red/green 4-dig	
7	PROBE LENGTH L	100 [mm]	200 [mm]

FEMALE CORDSET ECV531



ITEM	FEATURE	CAPACITY
1	SPECIAL FEATURE	-Free from silicone. -Halogen - free. -Gold - plated contacts. - Screened cable. -Drag chain suitability.
2	OPERATING VOLTAGE	< 50 VAC / < 60 VDC
3	DIMENSIONS	26,5 x 15,5 x 36,5 [mm]
4	ELECTRICAL CONNECTION	Cable: 10m, PUR, Halogen-free, black, Ø 4,9mm, shielded, 4 x 0,34 mm ² (42 x Ø 0,1 mm)

PROGRESSIVE RING FITTING E40260



ITEM	FEATURE	CAPACITY
1	INSTALLATION	Preogressive ring fitting
2	PRESSURE RATING	50 [bar]
3	PRESSURE EQUIPMENT DIRECTIVE	A possible classification to PED depends on the application and has to be carried out by the user / operator.
4	WEIGHT	159,3 [g]
5	MATERIALS	Stainless steel; Gasket: FKM
6	SENSOR CONNECTION	Ø 8 mm.
7	PROCESS CONNECTION	Threaded connection G 3/4

All rights reserved by iSiiNitzan. Reproduction and distribution of any part of this document is prohibited.





**SIGNET 515 ROTOR-X PADDLEWHEEL FLOW
SENSOR**

P51530 P0

P51530 P1

P51530 P2



**SIGNET 2536 ROTOR-X PADDLEWHEEL FLOW
SENSOR**

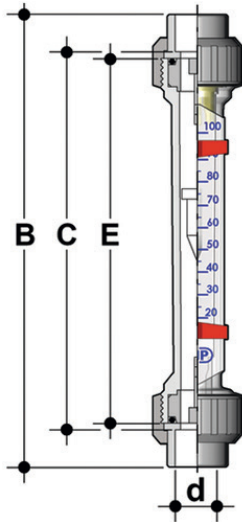
S-3-2536 P0

S-3-2536 P1

S-3-2536 P2



FLOWMETER FCIV-PVC-T

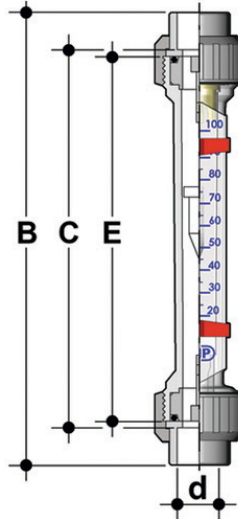


ART. CODE	DESCRIPTION	FLUID	FLOW RATE RANGE [L/h]	CONNECTION
FCIV016T1M0015	Flow Sensor	H2O	1,5 - 15	16
FCIV016T1M0020	Flow Sensor	H2O	2 - 20	16
FCIV016T1M0050	Flow Sensor	H2O	5 - 50	16
FCIV016T1M0100	Flow Sensor	H2O	10 - 100	16
FCIV016T1M0150	Flow Sensor	H2O	15 - 150	16
FCIV020T1M0025	Flow Sensor	H2O	2 - 25	20
FCIV020T1M0050	Flow Sensor	H2O	5 - 50	20
FCIV020T1M0100	Flow Sensor	H2O	10 - 100	20
FCIV020T1M0150	Flow Sensor	H2O	15 - 150	20
FCIV020T1M0200	Flow Sensor	H2O	20 - 200	20
FCIV020T1M0320	Flow Sensor	H2O	30 - 320	20
FCIV025T1M0080	Flow Sensor	H2O	8 - 80	25
FCIV025T1M0150	Flow Sensor	H2O	15 - 150	25
FCIV025T1M0200	Flow Sensor	H2O	20 - 200	25
FCIV025T1M0350	Flow Sensor	H2O	30 - 350	25
FCIV025T1M0650	Flow Sensor	H2O	50 - 650	25
FCIV032T1M0200	Flow Sensor	H2O	20 - 200	32
FCIV032T1M0300	Flow Sensor	H2O	30 - 300	32
FCIV032T1M0600	Flow Sensor	H2O	60 - 600	32
FCIV032T1M1000	Flow Sensor	H2O	100 - 1000	32

ART. CODE	DESCRIPTION	FLUID	FLOW RATE RANGE [L/h]	CONNECTION
FCIV016T1X0030	Flow Sensor	H2O	3 - 30	16
FCIV016T1X0040	Flow Sensor	H2O	4 - 40	16
FCIV016T1X0100	Flow Sensor	H2O	10 - 100	16
FCIV016T1X0200	Flow Sensor	H2O	20 - 200	16
FCIV016T1X0300	Flow Sensor	H2O	30 - 300	16
FCIV020T1X0050	Flow Sensor	H2O	5 - 50	20
FCIV020T1X0100	Flow Sensor	H2O	10 - 100	20
FCIV020T1X0160	Flow Sensor	H2O	15 - 160	20
FCIV020T1X0250	Flow Sensor	H2O	20 - 250	20
FCIV020T1X0350	Flow Sensor	H2O	35 - 350	20
FCIV020T1X0600	Flow Sensor	H2O	60 - 600	20
FCIV025T1X0150	Flow Sensor	H2O	15 - 150	25
FCIV025T1X0250	Flow Sensor	H2O	25 - 250	25
FCIV025T1X0400	Flow Sensor	H2O	40 - 400	25
FCIV025T1X0600	Flow Sensor	H2O	50 - 600	25
FCIV025T1X1100	Flow Sensor	H2O	100 - 1100	25
FCIV032T1X0400	Flow Sensor	H2O	40 - 400	32
FCIV032T1X0600	Flow Sensor	H2O	50 - 600	32
FCIV032T1X1000	Flow Sensor	H2O	100 - 1000	32
FCIV032T1X1500	Flow Sensor	H2O	150 - 1500	32

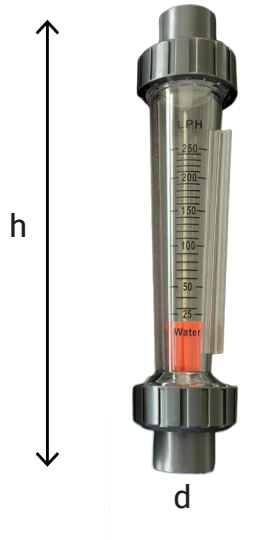
All rights reserved by iSinitzan. Reproduction and distribution of any part of this document is prohibited.



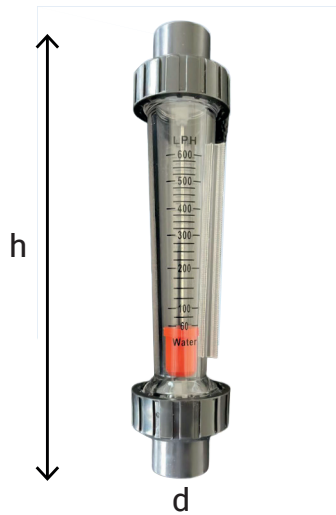


ART. CODE	DESCRIPTION	FLUID	FLOW RATE RANGE [L/h]	CONNECTION
FCIV016T2M0014	Flow Sensor	HCL	1,4 - 14	16
FCIV016T2M0018	Flow Sensor	HCL	2 - 18	16
FCIV016T2M0045	Flow Sensor	HCL	5 - 45	16
FCIV016T2M0090	Flow Sensor	HCL	10 - 90	16
FCIV016T2M0140	Flow Sensor	HCL	14 - 140	16
FCIV020T2M0023	Flow Sensor	HCL	2 - 23	20
FCIV020T2M0045	Flow Sensor	HCL	5 - 45	20
FCIV020T2M0090	Flow Sensor	HCL	10 - 90	20
FCIV020T2M0140	Flow Sensor	HCL	14 - 140	20
FCIV020T2M0185	Flow Sensor	HCL	19 - 185	20
FCIV020T2M0300	Flow Sensor	HCL	30 - 300	20
FCIV025T2M0075	Flow Sensor	HCL	7,5 - 75	25
FCIV025T2M0140	Flow Sensor	HCL	14 - 140	25
FCIV025T2M0185	Flow Sensor	HCL	19 - 185	25
FCIV025T2M0325	Flow Sensor	HCL	30 - 325	25
FCIV025T2M0600	Flow Sensor	HCL	45 - 600	25
FCIV032T2M0185	Flow Sensor	HCL	19 - 185	32
FCIV032T2M0280	Flow Sensor	HCL	28 - 280	32
FCIV032T2M0550	Flow Sensor	HCL	55 - 550	32
FCIV032T2M0900	Flow Sensor	HCL	90 - 900	32

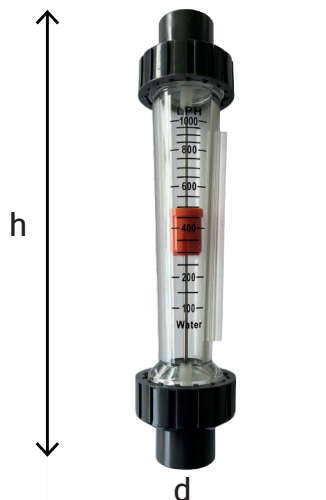




ART. CODE	SCALE	DIMENSIONS		
	LPH	DN	d [mm]	h [mm]
LZS-15D 25 - 250 L/H	25 - 250	16	20	208



ART. CODE	SCALE	DIMENSIONS		
	LPH	DN	d [mm]	h [mm]
LZS-15D 60 - 600 L/H	60 - 600	16	20	208



ART. CODE	SCALE	DIMENSIONS		
	LPH	DN	d [mm]	h [mm]
LZS-15D 100-1000 L/H	100 - 1000	16	20	208

All rights reserved by iSinitzan. Reproduction and distribution of any part of this document is prohibited.

