

CENTRIFUGAL VERTICAL



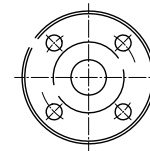
ITEM THECNICAL CHARACTEISTICS

- 1 VARIOUS QUANTITIES AND SIZES OF IMPELLERS TO ACHIEVE REQUIRED PRESSURE AND FLOW RATE
- 2 SPLINED SHAFT FOR INCREASED MECHANICAL ROBUSTNESS
- 3 FLOATING TYPE SEALING RINGS, EASY TO REPLACE
- 4 CAN BE COUPLED WITH STANDARDIZED IEC MOTORS
- 5 ALL COMPONENTS IN CONTACT WITH THE LIQUID ARE STAINLESS STEEL

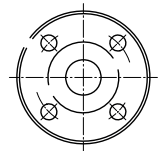
ART. CODE	DN1	DN2
32 1 - 32 10	50	50
45 1 - 45 6	75	75
64 1 - 64 4	90	90

SUCTION

DISCHARGE



DN1



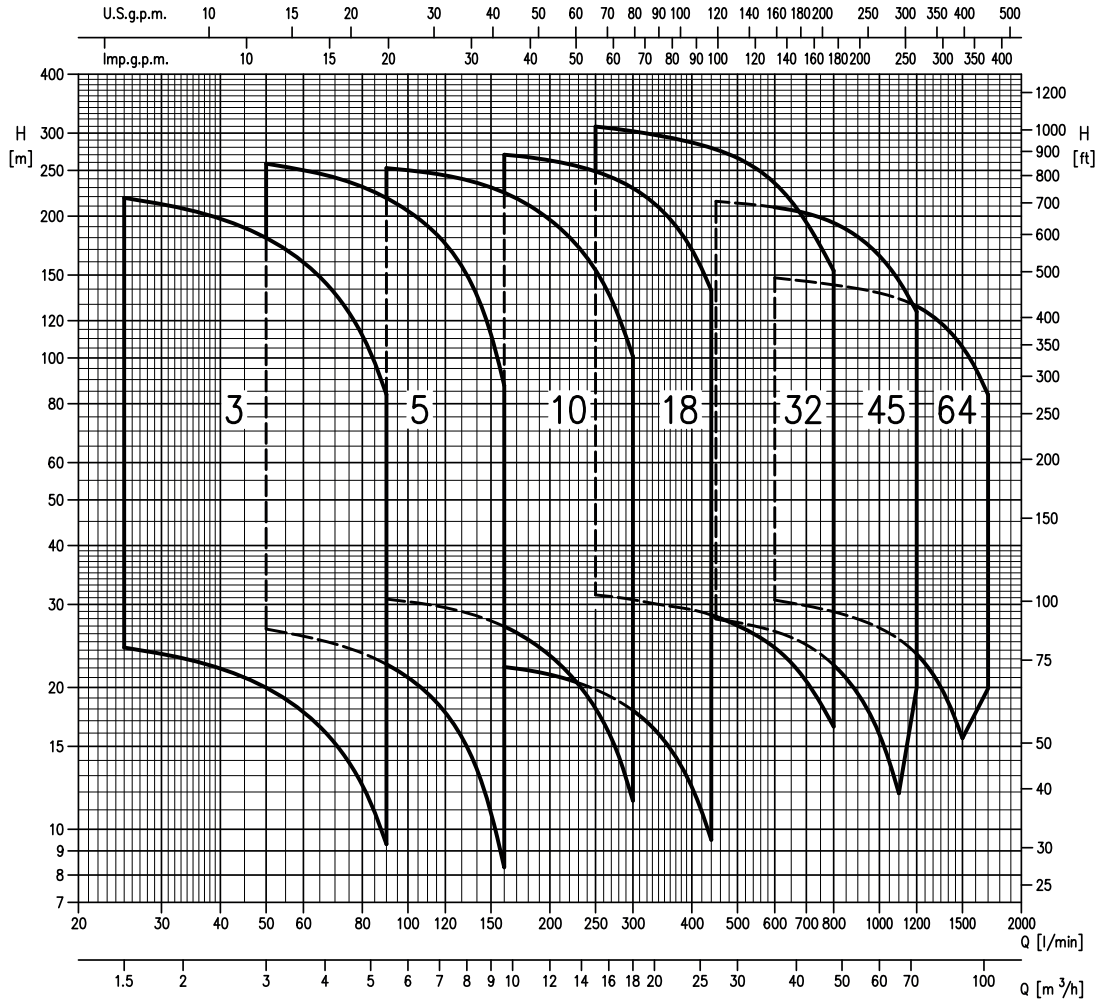
DN2

MOTOR

ITEM	CHARACTERISTIC	DESCRIPTION
1	TYPE	THREE PHASES
2	No. OF POLES	2
3	ROTATION SPEED	3500
4	PROTECTION DEGREE	IP 55
5	FREQUENCY	50 - 60 HZ
6	VOLTAGE	220/380 UP TO 4kW, 380/660 ABOVE 5kW
7	CASING MATERIAL	AISI 304
8	IMPELLER MATERIAL	AISI 304



PERFORMANCE RANGE



All rights reserved by iSinitzan. Reproduction and distribution of any part of this document is prohibited.

iSii-Nitzan GmbH
Via Cremignone 4C, Sorengo,
Switzerland, CH 6924
+(41) 765851837
info@isii-nitzan.swiss
www.isii-nitzan.swiss

More Information:



Versión: J2024-1

CENTRIFUGAL VERTICAL



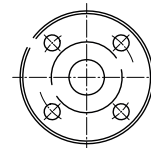
TECHNICAL CHARACTERISTICS

- 1 DELIVERY: UP TO 160 m³/h
- 2 HEAD: UP TO 280 m
- 3 TEMPERATURE OF PUMPED LIQUID FROM -30°C TO +120°C FOR THE STANDARD VERSION
- 4 HYDRAULIC PERFORMANCE COMPLIANT WITH ISO 9906:2012
- 5 DIRECTION OF ROTATION: CLOCKWISE WHEN LOOKING AT THE PUMP FROM THE TOP DOWN

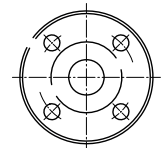
ART. CODE	DN1	DN2
1 SV - 3SV	25	25
5 SV	32	32
10 SV	40	40
15 SV - 22 SV	50	50
33 SV	65	65
46 SV	80	80
66 SV - 92 SV	100	100
125 SV	125	125

SUCTION

DISCHARGE



DN1



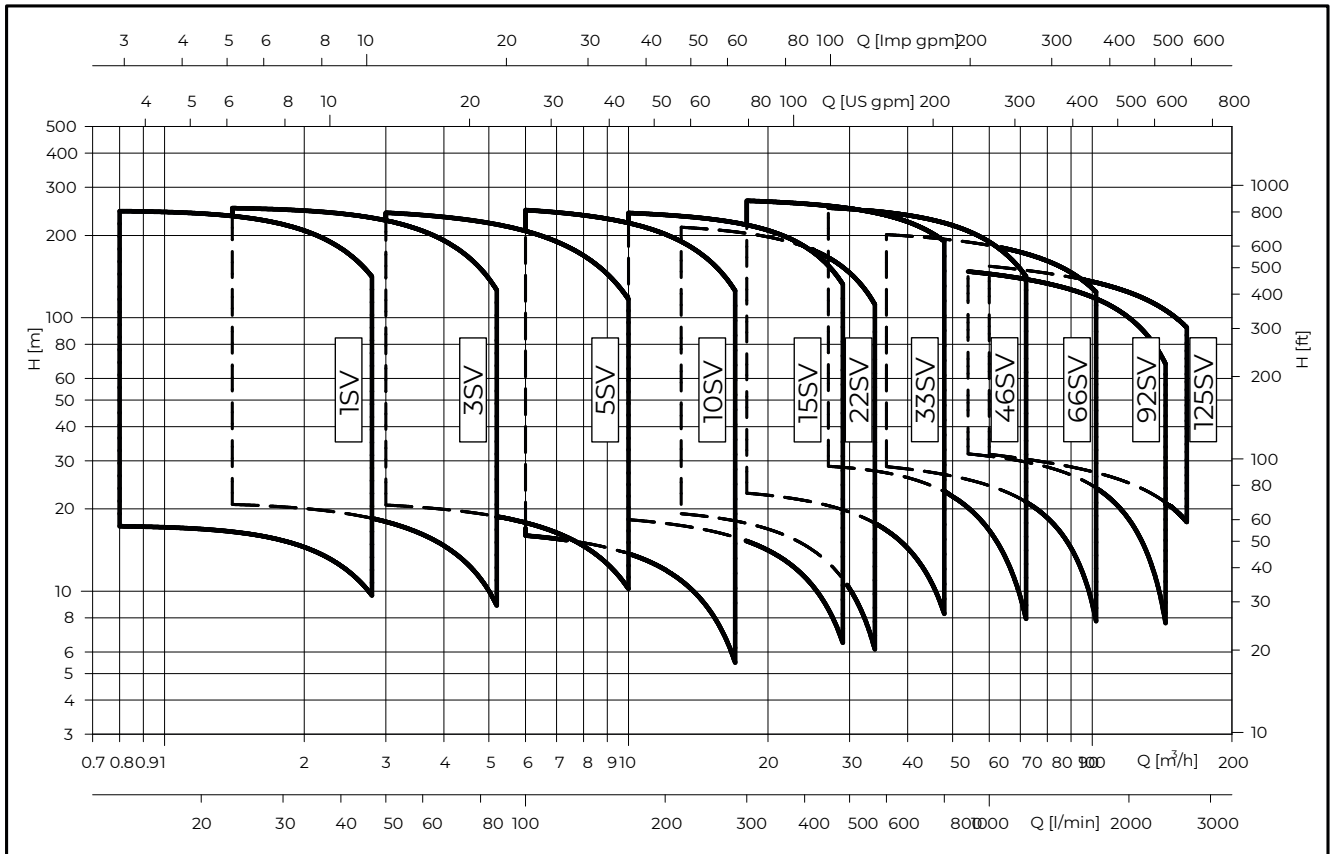
DN2

MOTOR

ITEM	CHARACTERISTIC	DESCRIPTION
1	TYPE	ONE AND THREE PHASES
2	No. OF POLES	2
3	ROTATION SPEED	3500
4	PROTECTION DEGREE	IP 55
5	FREQUENCY	50 - 60 HZ
6	VOLTAGE	220V / 220 380 UP TO 55 kW
7	CASING MATERIAL	AISI 316
8	IMPELLER MATERIAL	AISI 316



PERFORMANCE RANGE



All rights reserved by iSiiNitzan. Reproduction and distribution of any part of this document is prohibited.

iSii-Nitzan GmbH
Via Cremignone 4C, Sorengo,
Switzerland, CH 6924
+(41) 765851837
info@isii-nitzan.swiss
www.isii-nitzan.swiss

More Information:



Versión: J2024-1

CENTRIFUGAL VERTICAL



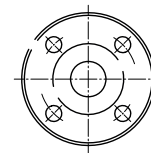
ITEM THECNICAL CHARACTERISTICS

- 1 POWER SUPPLY SYSTEMS VARY IN FREQUENCY, VOLTAGE, AND REQUIRED PROTECTION METHODS
- 2 HIGH TEMPERATURES CAN DAMAGE SEAL FACES WITHOUT PROPER PRECAUTIONS
- 3 SAFETY CONCERNS MAY REQUIRE SPECIAL MEASURES FOR AGGRESSIVE, TOXIC, OR FLAMMABLE LIQUIDS
- 4 CR PUMP ELEMENTS ARE ADAPTABLE TO HANDLE DEMANDING LIQUIDS, PRESSURES, AND OTHER REQUIREMENTS
- 5 SPECIAL SOLUTIONS ARE AVAILABLE FOR VERY HIGH PRESSURES

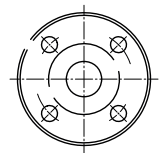
ART. CODE	DN1	DN2
CRN, CRNE 1S 1 3 5	32	32
CRN CRNE 10 15 20	50	50
CRN CRNE 15 20	65	65
CRN CRNE 32 45	80	80
CRN 64 95	100	100
CRN CRNE 125 155	15	15

SUCTION

DISCHARGE



DN1



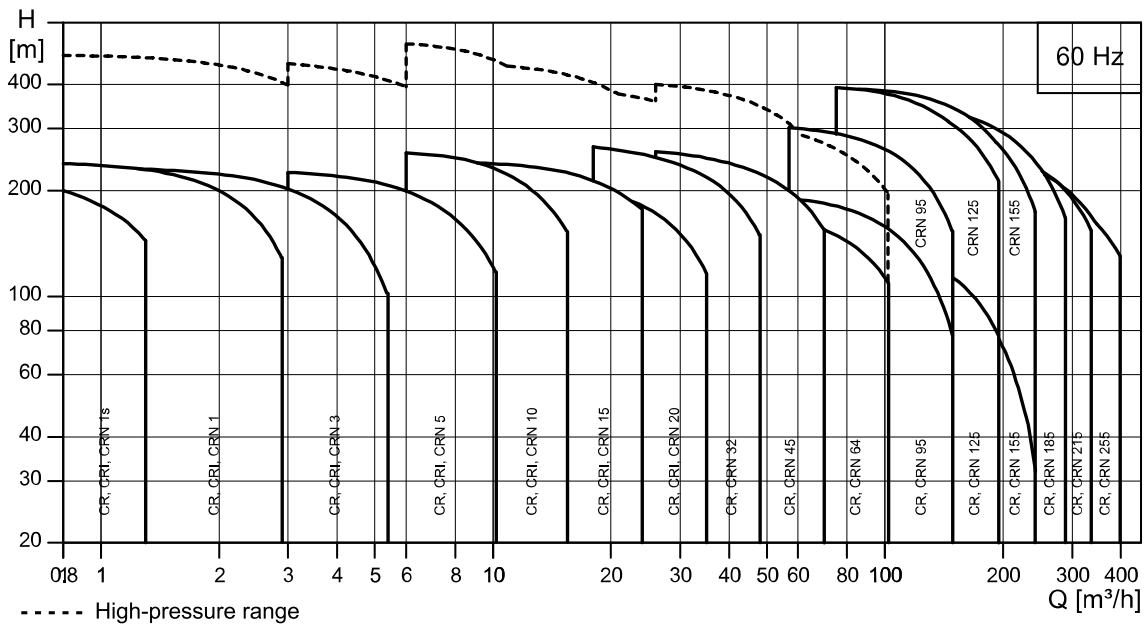
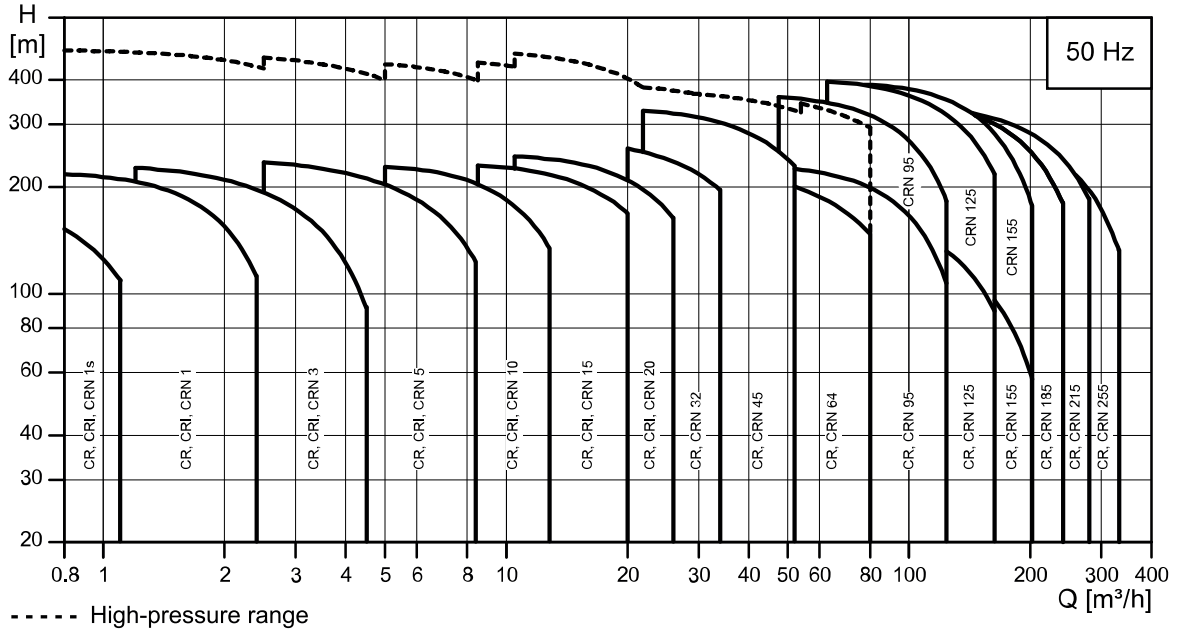
DN2

MOTOR

ITEM	CHARACTERISTIC	DESCRIPTION
1	TYPE	THREE PHASES
2	No. OF POLES	2
3	POWER	FROM 1 TO 200 kW 3-PHASE PUMPS PREMIUM EFFICIENCY
4	PROTECTION DEGREE	IP 55
5	FREQUENCY	50 - 60 HZ
6	VOLTAGE	220 380 440 660 V
7	CASING MATERIAL	AISI 304
8	IMPELLER MATERIAL	AISI 304



PERFORMANCE RANGE



All rights reserved by iSinitzan. Reproduction and distribution of any part of this document is prohibited.

iSii-Nitzan GmbH

Via Cremignone 4C, Sorengo,
Switzerland, CH 6924

+ (41) 765851837

info@isii-nitzan.swiss

www.isii-nitzan.swiss

More Information:



Versión: J2024-1

CENTRIFUGAL VERTICAL



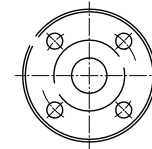
ITEM TECHNICAL CHARACTERISTICS

- 1 EASY MAINTENANCE WITH CARTRIDGE MECHANICAL SEALS
- 2 READINESS TO HANDLE A WIDE VARIETY OF LIQUIDS BY UTILIZING APPROPRIATE PUMP MATERIALS
- 3 STARTING AT 1 M3/H AND GOING UP TO 210 M3/H IN THE BEST EFFICIENCY POINT
- 4 WIDE PUMPING RANGE OPTIMIZED ACROSS 13 SIZES
- 5 VDR00 RANGE PROVIDES TOP-NOTCH PERFORMANCE, VERSATILITY, AND EFFICIENCY

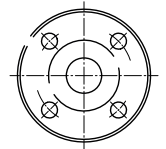
ART. CODE	DN1	DN2
VDR001 - 003 - 005	25	25
VDR 0010 - 0015 - 0020	40	40
VDR 0032	65	65
VDR 0045	80	80
VDR 0065 - 0090	100	100
VDR 00125 - 00150	125	125
VDR 00210	150	150

SUCTION

DISCHARGE



DN1



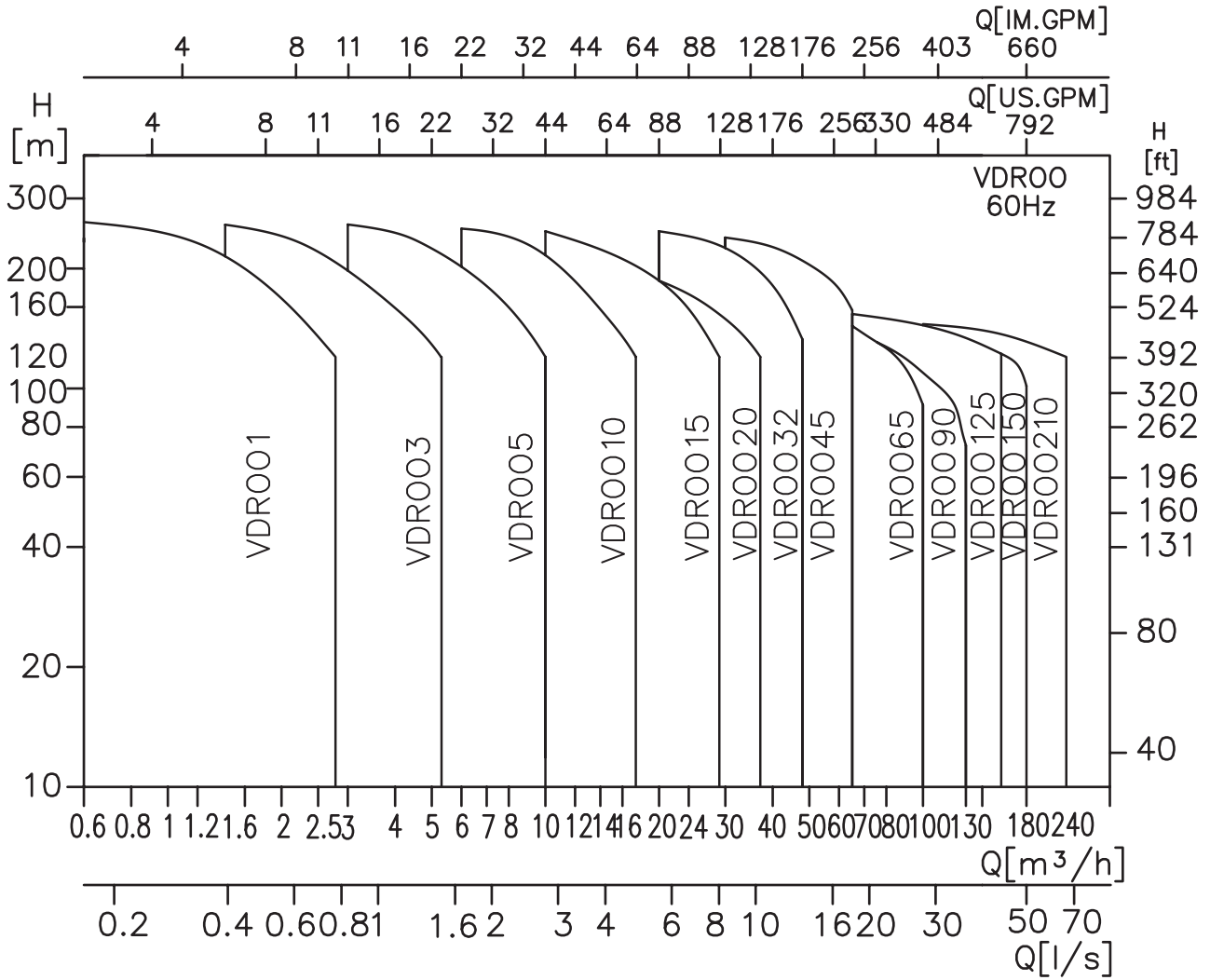
DN2

MOTOR

ITEM	CHARACTERISTIC	DESCRIPTION
1	TYPE	SINGLE AND THREE PHASES
2	No. OF POLES	2
3	POWER	FROM 0.37 TO 130 KW 3-PHASE PUMPS PREMIUM EFFICIENCY
4	PROTECTION DEGREE	IP 55
5	FREQUENCY	50 - 60 HZ
6	VOLTAGE	220 440 V
7	CASING MATERIAL	AISI 304
8	IMPELLER MATERIAL	AISI 304



PERFORMANCE RANGE



All rights reserved by iSinitzan. Reproduction and distribution of any part of this document is prohibited.

