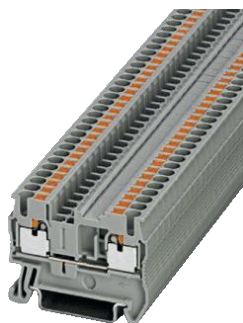




TERMINAL



4211140



2073286

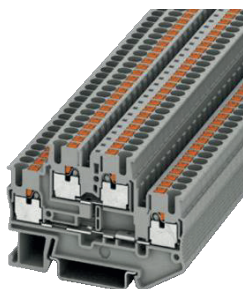


7600703

ART. CODE	DESCRIPTION	DIMENSIONS
4211140	PHOE VERBRIJGKLM 3209510	0.14 t/m 4 mm ²
2073286	PHOE EINDSTEUN CLIPFIX 35	
7600703	PHOE EINDPLT RIJGKLEM2,5	



TERMINAL



4211298

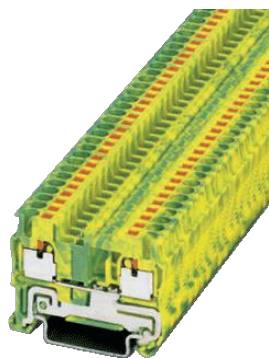


4211348

ART. CODE	DESCRIPTION	DIMENSIONS
4211298	PHOE VERB RIJGKLM 3210567	0.14 t/m 4 mm ²
4211348	PHOE EINDPLT RIJGKLEM	



TERMINAL



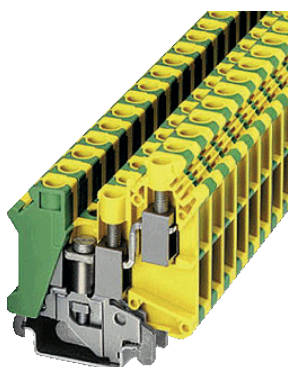
ART. CODE	DESCRIPTION	DIMENSIONS
4211165	PT Ground	0.14 t/m 4 mm ²

All rights reserved by iSiiNitzan. Reproduction and distribution of any part of this document is prohibited.





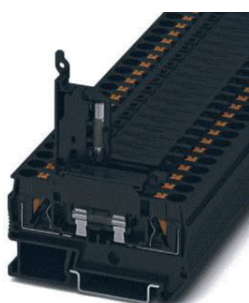
TERMINAL



ART. CODE	DESCRIPTION	DIMENSIONS
1427042	PT Ground	0.5 t/m 16 mm ²



FUSE HOLDER



ART. CODE	DESCRIPTION	CAPACITY
9655322	Fuse holder 6.2mm	max. 6,3



FUSE



ART. CODE	DESCRIPTION	N° SLOW
3431327	ESKA Glass 5X20mm	1
331368	ESKA Glass 5X20mm	2
3550357	ESKA Glass 5X20mm	3,15
3498540	ESKA Glass 5X20mm	4
3498565	ESKA Glass 5X20mm	6,3





SOCKET



ART. CODE	DESCRIPTION
8103707	Ground Connection



SPIROBAND



ART. CODE	DESCRIPTION	LENGHT
625657	PW SPIROBAND TSR6 6mm RO	25 meter

SOCKET



ART. CODE	DESCRIPTION
3142775	Socket 220V for general use.

All rights reserved by iSiNitzan. Reproduction and distribution of any part of this document is prohibited.



TE SYS VARIO



DESCRIPTION

VBF4 Te Sys Vario - Switch disconnecter - 8 [A]

VBF1 Te Sys Vario - Switch disconnecter - 32 [A]

VBF3 Te Sys Vario - Switch disconnecter - 63 [A]

VBF6 Te Sys Vario - Switch disconnecter - 175 [A]

ISOLATION TRANSFORMER



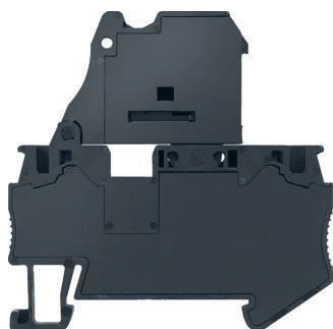
CR171



CT256

ART. CODE	DESCRIPTION	CAPACITY	POWER
CR171	Isolation Transformer	440 V/AC 230 V/AC	2000 VA
CT256	Isolation Transformer	440 V/AC 24 V/AC	400 VA

FUSE HOLDER



ART. CODE DESCRIPTION

8WH2000-1GG08 Fuse Holder

All rights reserved by iSiinitzan. Reproduction and distribution of any part of this document is prohibited.





BREAKER 2P



ART. CODE	DESCRIPTION
9316422	Schneider M9F112 2P C1
9316429	Schneider M9F112 2P C2
9316436	Schneider M9F112 2P C3
9316443	Schneider M9F112 2P C4
9316450	Schneider M9F112 2P C6
9316457	Schneider M9F112 2P C10
9316464	Schneider M9F112 2P C16
9316471	Schneider M9F112 2P C20
9316478	Schneider M9F112 2P C25
9316485	Schneider M9F112 2P C32
9316492	Schneider M9F112 2P C40
9316499	Schneider M9F112 2P C50
3916506	Schneider M9F112 2P C63



BREAKER 3P



ART. CODE	DESCRIPTION
9316513	Schneider M9F113 3P C1
9316520	Schneider M9F113 3P C2
9316527	Schneider M9F113 3P C3
9316534	Schneider M9F113 3P C4
9316541	Schneider M9F113 3P C6
9316548	Schneider M9F113 3P C10
9316555	Schneider M9F113 3P C16
9316562	Schneider M9F113 3P C20
9316569	Schneider M9F113 3P C25
9316576	Schneider M9F113 3P C32
9316583	Schneider M9F113 3P C40
931690	Schneider M9F113 3P C50
9316597	Schneider M9F113 3P C63

All rights reserved by iSiiNitzan. Reproduction and distribution of any part of this document is prohibited.





DISTRIBUTION BLOCK



ART. CODE	DESCRIPTION	CURRENT	HOLES
9018509	Linergy DSscrew distribution block 1P	100 A	14
9018523	LinergyDS screw distribution block 1P	160 A	14



EMERGENCY BUTTON



ART. CODE	DESCRIPTION
1486801	Emergency stop button NA/NC contacts
2867251	Emergency stop button NA/ 2xNC contacts

ELECTRICAL MATERIAL



INDICATOR LIGHT



ART. CODE	DESCRIPTION
1486821	Indicator light 22mm green 24 VAC/dc
1486823	Indicator light 22mm red 24 VAC/dc
1486484	Indicator light 22mm yellow 24 VAC/dc

All rights reserved by iSiiNitzan. Reproduction and distribution of any part of this document is prohibited.





SE PUSH BUTTON



ART. CODE	DESCRIPTION
1486874	SE push button with LED lamp NO 1x



BUZZER



ART. CODE	DESCRIPTION
1487029	SE Buzzer



SE SELECTOR SWITCH



ART. CODE	DESCRIPTION
1486718	SE selector switch 3 positions

All rights reserved by iSiinitzan. Reproduction and distribution of any part of this document is prohibited.

iSii-Nitzan GmbH
 Via Cremignone 4C, Sorengo,
 Switzerland, CH 6924
 +(41) 765851837
 info@isii-nitzan.swiss
 www.isii-nitzan.swiss

More Information:



Versión: J2024-1



SE BLINDSTOP



ART. CODE	DESCRIPTION
2081248	SE BLINDSTOP ZB5SZ3 XD



PANEL MOUNT LED



ART. CODE	DESCRIPTION
804550405	IMM M22 panel mount LED multi colour beacon



RELAYS



1705052



1705243

ART. CODE	DESCRIPTION
1705052	OMRO RELAIS MY2IN(S) 24AC
1705243	OMRO RELAIS MY4IN(S) 24AC

All rights reserved by iSiinitzan. Reproduction and distribution of any part of this document is prohibited.

iSii-Nitzan GmbH
Via Cremignone 4C, Sorengo,
Switzerland, CH 6924
+(41) 765851837
info@isii-nitzan.swiss
www.isii-nitzan.swiss

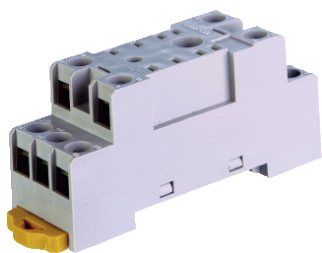
More Information:



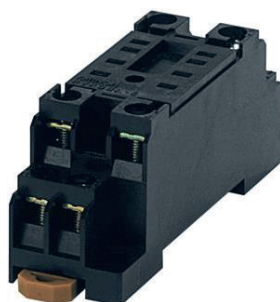
Versión: J2024-1

OMRON

FRONT-MOUNTING SOCKETS



6419782



6569131

ART. CODE	DESCRIPTION
6419782	OMRO REL.VOET PYF08AN
6569131	OMRO REL.VOET PYF14AN

ELECTRICAL CONTACTOR



7050784



7050230

ART. CODE	DESCRIPTION	VOLTAGE	CURRENT	POWER
7050784	SE MAGNSCHAK LC1D09B7	24 VAC	9 A	2,2 kW at 220 to 230 VAC 4 kW at 380 to 400 VAC 4 kW at 415 to 440 VAC
7050230	SE MAGNSCHAK LC1D25B7	24 VAC	25 A	5,5 kW at 220 to 230 VAC 11 kW at 380 to 400 VAC 11 kW at 415 to 440 VAC

SE THERM RELAYS



7050362



7050511

ART. CODE	DESCRIPTION	CURRENT RANGE
7050362	SE THERM REL LRD05	0,63 to 1 A
7050511	SE THERM REL LRD16	9 to 13 A

All rights reserved by iSiinitzan. Reproduction and distribution of any part of this document is prohibited.

iSii-Nitzan GmbH
 Via Cremignone 4C, Sorengo,
 Switzerland, CH 6924
 +(41) 765851837
 info@isii-nitzan.swiss
 www.isii-nitzan.swiss

More Information:



Versión: J2024-1



FSP - UPS - NANO

ART. CODE	DESCRIPTION	CAPACITY
1244605	FSP Fortron Nano 220 v UPS	800 VA/480 W
975450	FSP Fortron Nano 220 v UPS	600 VA/360 W

MENNEKES
MY POWER CONNECTION



WCD

ART. CODE	DESCRIPTION
2856516	WCD

MENNEKES
MY POWER CONNECTION

DOUBLE WCD



2856698

2856706

ART. CODE	DESCRIPTION
2856698	Double WCD
2856706	Double WCD

All rights reserved by iSiinitzan. Reproduction and distribution of any part of this document is prohibited.



MENNEKES
MY POWER CONNECTION

SWITCH



ART. CODE	DESCRIPTION
2856565	Switch

MENNEKES
MY POWER CONNECTION

WCD & PLUG 3P



ART. CODE	DESCRIPTION
3143187	WDC 16A amp 3p + ground
4130720	WDC 32A amp 3p + ground

ART. CODE	DESCRIPTION
6750041	Plug 16A amp 3p + ground
6750055	Plug 32A amp 3p + ground

All rights reserved by iSiiNitzan. Reproduction and distribution of any part of this document is prohibited.

iSii-Nitzan GmbH
Via Cremignone 4C, Sorengo,
Switzerland, CH 6924
+(41) 765851837
info@isii-nitzan.swiss
www.isii-nitzan.swiss

More Information:



Versión: J2024-1



MENNEKES
MY POWER CONNECTION



WDC & PLUG 4P

ART. CODE	DESCRIPTION
2967784	WDC 16A amp 4p + ground
3576402	WDC 32A amp 4p + ground

ART. CODE	DESCRIPTION
1201238	Plug 16A amp 4p + ground
1201231	Plug 32A amp 4p + ground



MENNEKES
MY POWER CONNECTION



WDC & PLUG 2P

ART. CODE	DESCRIPTION
6811218	WDC 16A amp 2p + ground

ART. CODE	DESCRIPTION
4326815	Plug 16A amp 2p + ground

All rights reserved by iSiiNitzan. Reproduction and distribution of any part of this document is prohibited.

iSii-Nitzan GmbH
Via Cremignone 4C, Sorengo,
Switzerland, CH 6924
+(41) 765851837
info@isii-nitzan.swiss
www.isii-nitzan.swiss

More Information:



Versión: J2024-1

MENNEKES
MY POWER CONNECTION

COUPLING SOCKET



ART. CODE	DESCRIPTION
1201210	MENN CEE KOPPCST 5/16/400V PWX
1201203	MENN CEE KOPPCST 5/32/400V PWX

MENNEKES
MY POWER CONNECTION

COUPLING SOCKET



ART. CODE	DESCRIPTION
2181623	MENN CCETSTCD 853 16 a 5P
2181827	MENN CCETSTCD 853 32 a 5P

FEMALE CONNECTOR



ART. CODE	DESCRIPTION	CURRENT	VOLTAGE
7664105	SE CEE INBWCONTSTP 5P	16 A	400 V
7664212	SE CEE INBWCONTSTP 5P	32 A	400 V

All rights reserved by iSiiNitzan. Reproduction and distribution of any part of this document is prohibited.

iSii-Nitzan GmbH
Via Cremignone 4C, Sorengo,
Switzerland, CH 6924
+(41) 765851837
info@isii-nitzan.swiss
www.isii-nitzan.swiss

More Information:



Versión: J2024-1



CLAMP



ART. CODE	DESCRIPTION	PCS
3227386	OBO QUICKZADEL M16 9010	100
3227394	OBO QUICKZADEL M20 9010	100
3227402	OBO QUICKZADEL M25 9010	100
3227410	OBO QUICKZADEL M32 9010	100

PLASTIC BLACK CLAMP



ART. CODE	DESCRIPTION	LOG mm		BUNDLE mm	FORCE kg	PCS
110126071	BLACK (UV)	200	4,8	50	22	100
110126011	BLACK (UV)	200	4,8	50	22	1000
110226071	BLACK (UV)	370	4,8	102	22	100
110296071	BLACK (UV)	530	4,8	140	22	100
110367071	BLACK (UV)	750	7,6	218	54	100

TAPE



ART. CODE	DESCRIPTION	COLOR
4862926	MMM Tape 19 x 20 T1500	Grey

All rights reserved by iSiinitzan. Reproduction and distribution of any part of this document is prohibited.

iSii-Nitzan GmbH
 Via Cremignone 4C, Sorengo,
 Switzerland, CH 6924
 +(41) 765851837
 info@isii-nitzan.swiss
 www.isii-nitzan.swiss

More Information:



Versión: J2024-1